



Town of Sylvan Lake has new 'look'

Residents of the Town may have noticed a recent facelift at www.sylvanlake.ca.

As of May 2008 a new website went live making it easier for locals and visitors to find exactly what they are looking for.

"We wanted to create a site that was easy to navigate, exciting to look at and full of information that is relevant to our residents," Erin Peden, Communications Officer for the Town of Sylvan Lake said.

"With the help of our webmaster, Merv Carlson, we were able to achieve our goal."

When first arriving at the domain www.sylvanlake.ca, surfers will find an opportu-

nity to choose **live here** or **play here**. Residents looking for information such as taxes, recreation opportunities, administration contact information, garbage and recycling schedules, etc. will click on **live here**.

Anyone looking for details regarding accommodations, restaurants, and local attractions will enter at **play here**.

"Both areas are easy, functional and full of the information you're looking for," Peden said. "We are always looking for feedback on our initiatives and would love to hear from residents who have sug-

gestion as to what they would like to see on the site."

Any questions or concerns

regarding the new layout can be directed to Erin Peden at epeden@sylvanlake.ca.



Sylvan Lake - a great place to call 'home'

SUSAN SAMSON
Mayor

Thank you for taking a moment to flip through the pages of Sylvan Lake's first quarterly newsletter.

The Town of Sylvan Lake has seen some incredible changes in the first six months of 2008.

As a council we have already acknowledged headline issues such as recycling and the move towards becoming a green-conscious society, strategic preparation for community growth, Town beautification and affordable housing issues.

Undoubtedly, all residents have witnessed the economic and residential growth popping up all around us. Despite the



SUSAN SAMSON
Mayor

changes, we remain a tight-knit community that prides itself on its ability to put neighbors first.

I am very proud of the community I live in and I welcome all new residents, businesses and visitors to our beautiful Town.

I encourage everyone to become an active citizen. I have noticed that living in Sylvan Lake is very rewarding when you get involved and stay informed.

Please take a moment to read through this newsletter to catch up on the Town's recent activity.

We welcome your feedback and comments at

tsl@sylvanlake.ca or 403-887-2141.

Have a safe, healthy and active summer.

Our commitment to recycling

The Town of Sylvan Lake wants you to think green

Recycling has been made easier for residents of Sylvan Lake.

Green Box Recycling is now being picked up once a week on the same day of garbage pick-up.

“Up until recently we only picked up the recyclables every second week. However, we felt that residents would find it easier to remember to place the box outside if they were able to do it every week when they put their garbage out,” John Watson, Operations Foreman for the Town of Sylvan Lake explained. “There are a lot of advan-

tages to using your Green Box for recyclables. Not only are you making a smart ecological move for your community, but you’ll have less garbage to discard every week.”

At present, residents are permitted three bags of garbage every week.

If there is a need to have more than three bags picked up, garbage tags can be purchased at the Sylvan Lake Town Office for \$1 each.

“Keep in mind that we accept tin, flattened cardboard, paper, type 2 plastic and glass,” Watson said. “We’re making an effort to

keep recycling easy for everyone who lives in Sylvan Lake.”

Residents are also reminded that water conservation is now in effect until September 30.

Working on the even/odd system, residences are permitted to water their lawn from noon until 7 pm any day.

Yard waste can be dropped off at the Waste Transfer Facility .5 kms east of Sylvan Lake on HWY 11A and .5 kms south on RR12.

Yard waste is accepted at no-charge and can be dropped off at anytime.

Plant this insert... IT WILL GROW!

This insert is printed on recycled paper and is imbedded with annual and perennial wild flower seeds. Plant it and it will grow!

Place seed paper under a thin layer of soil, water thoroughly and keep moist. Plant in a sunny corner and watch it bloom!

Please Remember:

WATER CONSERVATION:

- In effect from May 1st to September 30th
- Odd/even system
- No watering from noon until 7 PM any day

GREEN BOX RECYCLING:

- Have items out for collection by 8 AM.
- We accept:
 - tin
 - glass
 - cardboard (flattened)
 - paper
 - plastic (type 2)
- Contact us if you do not have a Green Box

YARD WASTE:

- Yard waste is accepted at no-charge at the Waste Transfer Facility. The facility is located 0.5 kms. east of Sylvan Lake on Highway #11A and 0.5 kms. south on RR12.

(Please see reverse)

PROTECT OUR ENVIRONMENT!



Sylvan Lake Operations Department
Call 887-2800 or visit us at www.sylvanlake.ca

Did you plant your insert? Inserts like the one above arrived with your utility bill in March.



Caution: Man with a spatula!

Firefighter Steve Scanlan shows off his pancake flipping skills at this year’s Firemen’s Pancake Breakfast at the Annual 1913 Days celebration. Firefighters served pancakes and sausages to approximately 585 patrons despite the morning’s heavy rain.

Lakeside EMS to provide ambulance service July 1

As of July 1, 2008 Lakeside EMS is providing ambulance services to the Town of Sylvan Lake.

“Lakeside will be providing Advanced Life Support to Sylvan Lake, the summer villages and some areas of the County of Red Deer,” Dennis Krill, Director of Protective Services said.

“Lakeside will be working closely with our Fire Department from Oct. 1 - May 31. In fact, they will be utilizing Emergency Medical Respond-

ers from the Sylvan Lake Fire Department for Basic Life Support calls.”

The province has indicated that effective April 1, 2009, the health system will be governing ground emergency services (EMS).

“We, (as a Town), will be monitoring this transition closely to ensure the service to our community remains consistent,” Krill explained. “We are looking forward to working with this new provider.”

Reminder: Taxes are due on July 31

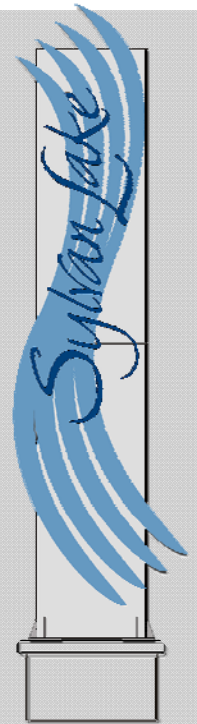
CANADIAN PRIDE '08



Entrance features a welcoming gesture to travelers visiting the Town of Sylvan Lake

Be on the lookout for two attractive new entrance features at the edge of town!

Plans are in the works to have the features placed near the intersection of HWY 11 and HWY 20 and in the centre of the new roundabout at the junction of HWY 11A and HWY 20.



Sylvan Lake joins EcoAction Team

The Town of Sylvan Lake is excited to announce our partnership with Earth Day Canada's EcoAction Team, a nationally recognized conservation program. This program will offer our residents a unique opportunity to take action and reduce their environmental footprint.

The Town of Sylvan Lake has taken a leadership role in becoming one of the first communities across Canada to unite with Earth Day Canada. This partnership is meant to build upon sustainable practices currently employed such as, weekly Green Box Recycling and water conservation methods like metering and limitations on outdoor watering.

The municipality recognizes that "environmentally friendly" policies and practices need to continually be developed and improved upon in order to be

effective and diminish our overall impact. The Town intends to focus on areas including: reduction and /or elimination of, herbicide and pesticide use, road maintenance chemicals, energy savings, water conservation and solid waste management.

The health of the lake is a shared concern in this community and therefore the ecological impact that individuals, businesses and government have on this resource is significant for everyone as the future will be determined by steps taken collectively today. The EcoAction Team allows for the opportunity for citizens to take pride and get involved.

"The Town of Sylvan Lake is proud to be associated with the Eco Action Team," Susan Samson, Mayor of Sylvan Lake said.

"All of our citizens will be encouraged to make simple

changes in their lifestyles that will reduce the impact on the watershed and subsequently the Lake. The protection and health of our environment, especially our lake, is a top priority of all residents of Sylvan Lake."

The Town of Sylvan Lake's intention is to educate and encourage our community mem-



Sylvan Lake—a resource worth taking care of!

Lakeshore Redevelopment concept completed

Sylvan Lake is looking to change the face of Lakeshore Drive.

The Lakeshore Redevelopment Draft, which was produced by Eidos Consulting, has been completed and the concept design was accepted by Council this past spring.

“The project has been received very well and has garnered a lot of positive comments,” Myron Thompson, Assistant CAO reported.

“We have held numerous open houses and public forums where the public has had a chance to view the designs and share their comments.”

The draft outlines major changes along Lakeshore

Drive, including Centennial Park.

The most notable change being the redirection of traffic to 50th Avenue.

Centennial Park would be extended over the existing Lakeshore Drive between 39th and 44th Street.

The park would also see vast improvements including sand volleyball courts, a pavilion, open beach access and an increased number of parking stalls.

Other points of interest include the removal of parking along the north side of Lakeshore Drive between 44th and 50th Str. as well as storm management upgrades that will

ensure better water quality and less run-off into Sylvan Lake.

“The project will not only provide a major facelift to the Lakeshore area,

but it will also shift the emphasis of vehicular traffic to that of a pedestrian-friendly area,” Thompson said.

“Design concepts include the development of a continuous Promenade that runs parallel with Lakeshore Drive.”

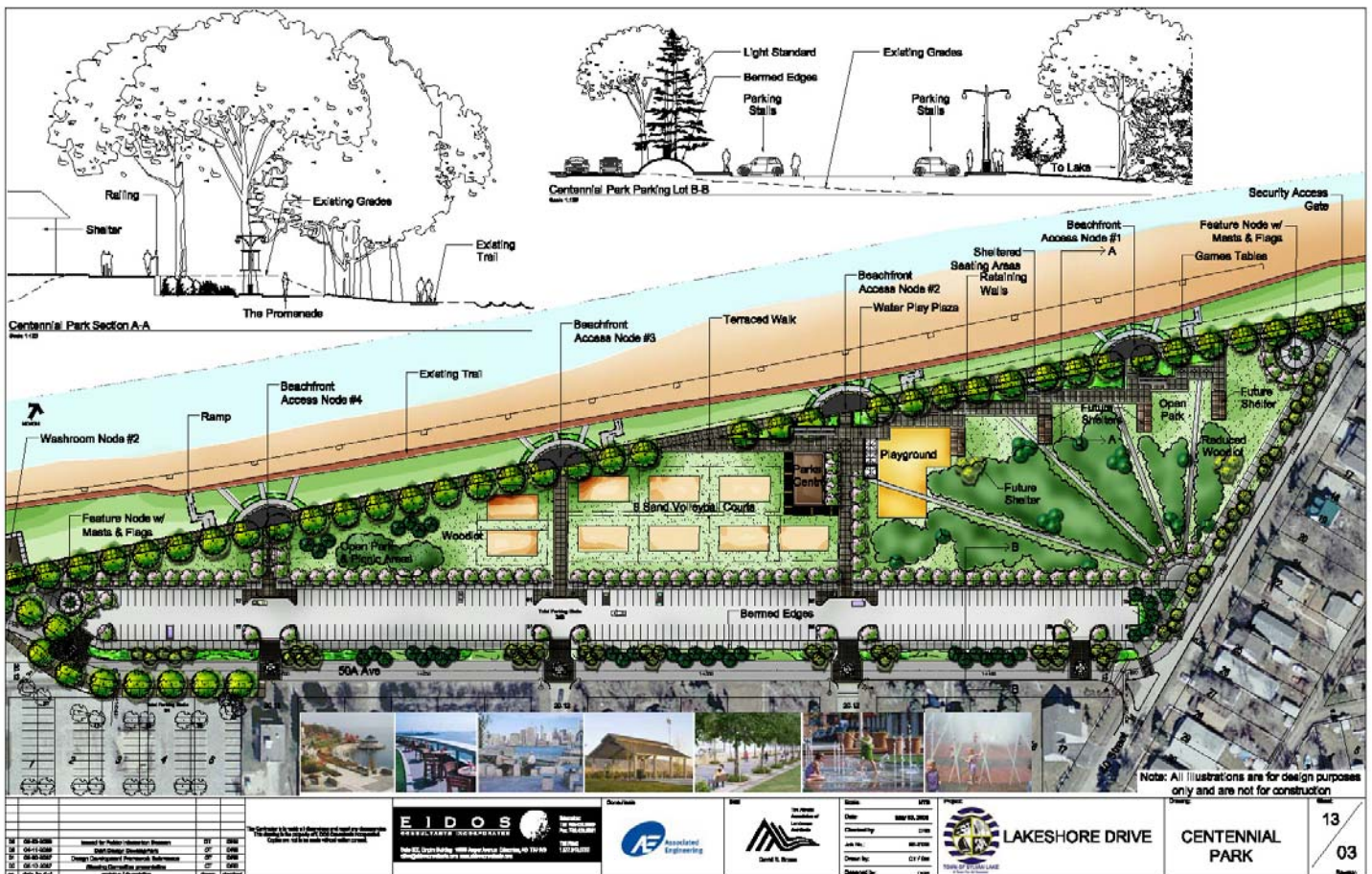
The timelines for the redevelopment have not yet been determined, however it is expected that the build-out of this project will be completed over a time span of 2 to 20 years.

“The Lakeshore Redevelopment plan will create a lasting legacy for the Town of Sylvan Lake,” Thompson said.

“The goal of this design is to support a vibrant, diverse, attractive and well planned environment for both residents and visitors of our community.”

“The Lakeshore Redevelopment plan will create a lasting legacy for the Town of Sylvan Lake.”

- Myron Thompson



Format changes made to council meetings

Sylvan Lake Town Council has recently changed the way they conduct meetings.

Previously, Council met the second and fourth Monday of every month to conduct regular decision-making meetings. Effective June 23, 2008, the Council will hold Committee as a Whole meetings the fourth Monday of every month.

“Committee as a Whole meetings are for information purposes only,” Helen Dietz, CAO of Sylvan Lake said.

“It is an informal meeting that allows the Council to discuss issues at hand.”

Regular meetings are still held the second Monday of every month. Both meetings begin at 5:30 pm and are open to the public.

July 2008

Sun	Mo	Tue	We	Thu	Fri	Sat
		1	2	3	4	5
6	7	8	9	10	11	12
13	14	15	16	17	18	19
20	21	22	23	24	25	26
27	28	29	30	31		

August 2008

Sun	Mo	Tue	We	Thu	Fri	Sat
					1	2
3	4	5	6	7	8	9
10	11	12	13	14	15	16
17	18	19	20	21	22	23
24	25	26	27	28	29	30
31						

September 2008

Sun	Mo	Tue	We	Thu	Fri	Sat
	1	2	3	4	5	6
7	8	9	10	11	12	13
14	15	16	17	18	19	20
21	22	23	24	25	26	27
28	29	30				

October 2008

Sun	Mo	Tue	We	Thu	Fri	Sat
			1	2	3	4
5	6	7	8	9	10	11
12	13	14	15	16	17	18
19	20	21	22	23	24	25
26	27	28	29	30	31	

*Please note that Council will not be meeting on July 28
*MPC will not be meeting on Aug. 5

- Regular Council Meeting
- Council Committee Meeting
- Municipal Planning Commission Meeting

Town Council Meetings: 5:30 pm
MPC Meetings: 6:00 pm



MAYOR SUSAN SAMSON



KEN MACVICAR



RICHARD BACKS



JOAN BARNES



JUDY PAYNE



FRANK PECK



LYNDA SILLS FIEDLER



www.sylvanlake.ca

Getting your head around the roundabout

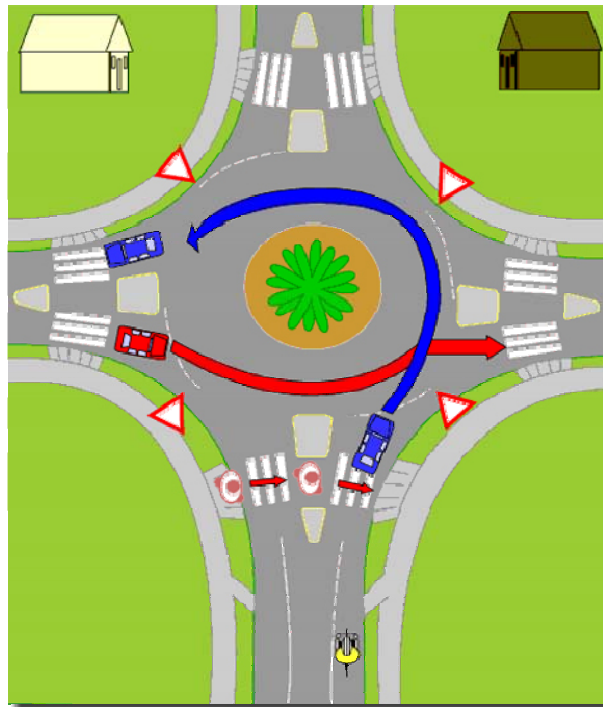
What is a modern roundabout?

The modern roundabout is not as scary as some think! It reduces delays, is economical and efficient.

A roundabout is an intersection that is designed to control traffic in a circular flow.

Traffic moves in a counter-clockwise direction around a central island.

Drivers in the circle have the right-of-way, while those entering the circle yield at entry and enter only when space becomes available.



General rules of driving a roundabout:

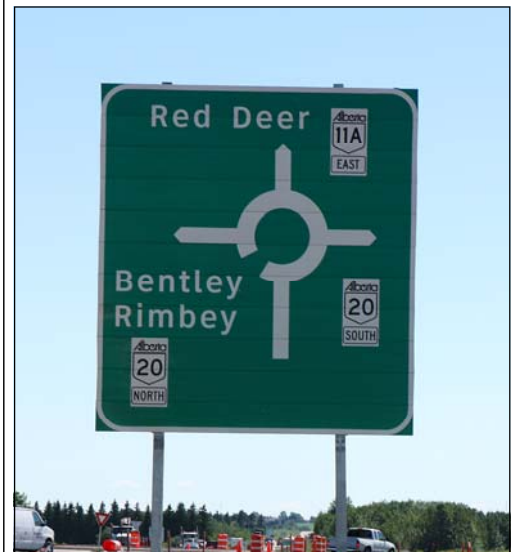
- **Slow down** upon approach to the roundabout
- **Watch** for traffic signs (one way and yield signs)
- **Yield** to pedestrians and bicyclists as you enter and exit the roundabout
- **Look** to the left for traffic
- **Enter** when it is safe
- Keep your **speed low** within the roundabout

Exit carefully to your destination

Roundabout at HWY Junction 11A and 20

Residents and visitors of Sylvan Lake will be affected by the new roundabout located at the junction of HWY 11A and HWY 20.

Construction of the roundabout started at the end of May 2008 and was expected to see completion by the beginning of July.



Get familiar with how to use a roundabout and travel safe!

Safety First!

Did you know that statistics have shown us that roundabouts are much safer than standard intersections?

- Roundabouts reduce injury/fatality related collisions by an average of 79 per cent.
- Slower speeds give drivers more time to react to their surroundings
- Traffic is always on the move so there is less chance of delay

Other Benefits:

- Reduction in pollution and fuel use
- Less noise due to fewer stops and starts
- No signal equipment to install and repair
- Improves visual quality and character through aesthetic landscaping

Getting there the roundabout way!



Railroad Promenade a beautiful addition

The stretch of land on the north side of 49th Avenue has seen a major facelift in the last year. The Parks and Recreation Department has put an enormous amount of time and effort into beautifying the lineal park.

“The park was developed to provide comfort for residents and travelers,” Myron Thompson, Assistant Chief Administrative Officer explained.

“It acts as a gateway to the downtown core and also connects to our major trail system.”

The park is located across from the Aquatic Centre and Median Multi-plex, and is just blocks away from the beach. It provides over 400 parking stalls as well as a plaza area for special events and celebrations.

“We’re very close to completing the project and hope to have a grand opening celebration in mid-summer,” Thompson said.

Tentative plans are scheduled for August 8 where Town residents will be invited to a street dance and fish fry.

Anyone interested in holding an event at Railroad Promenade should contact the Town Office at 403.887.2141 for booking details.



FARMERS MARKET AT RAILWAY PROMENADE

The Farmer’s Market is held every Friday afternoon from 4 pm to 7:30 pm and is lo-

cated in the East parking lot of the newly developed Railroad Promenade park.

Growth Strategy available on-line

Sylvan Lake is planning for the future.

The Town is encouraging residents to take a look at the Growth Strategy draft and take the time to direct their comments to the Planning and Development Department. Some things to ask yourself prior to commenting:

- How much growth should Sylvan Lake prepare for?
- What types of growth should we encourage?
- What types of growth should not be allowed?
- What types of job opportunities should we try to encourage?
- How fast should Sylvan Lake grow?
- Where should urban growth occur?
- Where should urban growth not take place?
- What do you think about the Growth Strategy’s preferred option?
- What are some of the things about Sylvan Lake that should be improved?
- What are the best things about Sylvan Lake that should be kept?

Need for Affordable Housing recognized

Sylvan Lake’s need for affordable housing has been acknowledged by the Town and is now one step closer to becoming a reality.

A newly formed Sylvan Lake Community Housing Society has been incorporated for the purpose of supporting the Town’s Affordable Housing plan.

According to Marlene Curtis, Director of Community and Social Development, the purpose of this society is to work with the community and the Town of Sylvan Lake to acquire new, affordable housing units, administer the operation and manage the occupancy of the units.

Recently, Luke Ouellette, MLA for Innisfail-Sylvan Lake Constituency, presented

the Sylvan Lake Community Housing Society with a cheque for \$648,514 in order to aid the society in building five affordable multi-family dwellings within the Town.

Anyone interested in learning more is encouraged to contact the Community and Social Development dept.



Visitor Information Centre now open

The Sylvan Lake Visitor Information Centre is now open for the tourist season.

The doors first opened this year on May long weekend after some extensive renovations were done to the interior.

“We want the visitors of Sylvan Lake to feel at home in our little information centre,” Erin Peden, Communications Officer said.

“When we say visitors — we are referring to everyone who comes through our door. We have a lot to offer the residents of Sylvan Lake as well as those who come from away.”

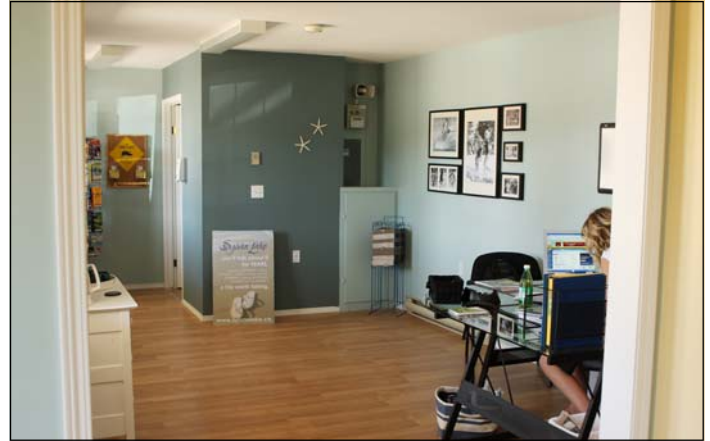
Visitors to the booth will find detailed information about the Town of Sylvan Lake, as well as information on a wide variety of travel destinations in Alberta.

“This year with the cost of fuel continuously rising, Travel Alberta is urging provincial residents to discover everything the province offers,” Peden said.

“They are suggesting that we Stay in our home province and take advantage of its enormous beauty. As a Town, we are 100 per cent in favor of this idea and hope to see a lot of Alberta resi-

dents coming through our door.”

The Visitor Information Centre hours are from Monday to Sunday 9 am—8 pm. Phone 403.887.5050.



Interior updates make booth comfortable and inviting.

How sweet it is ...

16 weekends of fun
in Central Alberta

May long weekend to
Labour Day weekend

albertasweet16.com
(800) 215-8946