

2022 BUDGET SURVEY

Send your feedback: www.sylvanlake.ca/budget



WHAT IS THE SURVEY?



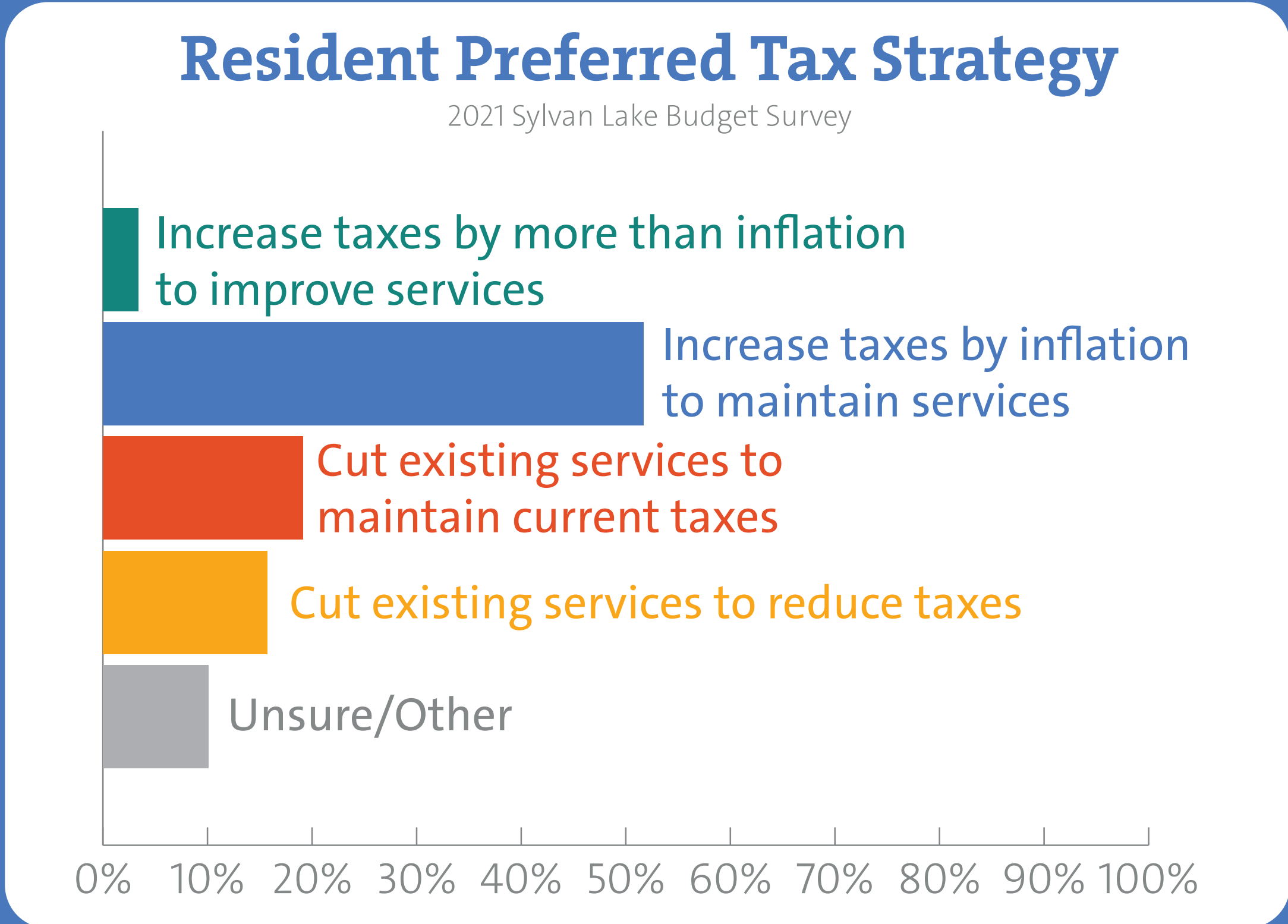
- » The Resident Budget Priority Setting Survey gives Sylvan Lakers an opportunity to discuss the budget with us, to help us as we make budget decisions.
- » Residents shared ideas to improve, maintain, or cut municipal services.

In the survey, residents:

- » **Discussed the budget;**
- » **Expressed their preferred tax strategy; and**
- » **Shared their top priorities**

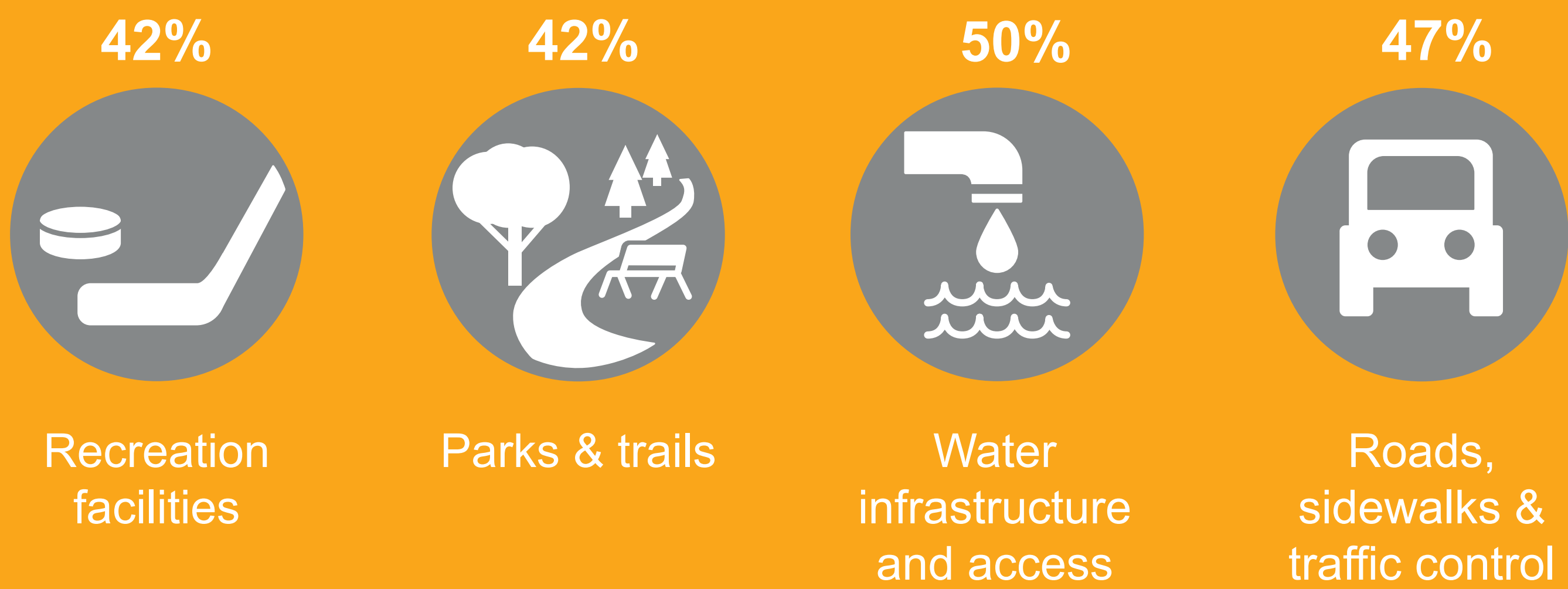
Tax Strategy

- » Four different tax strategy options are available.
- » Most residents chose to increase taxes by inflation.



TOP PRIORITIES AMONG RESIDENTS:

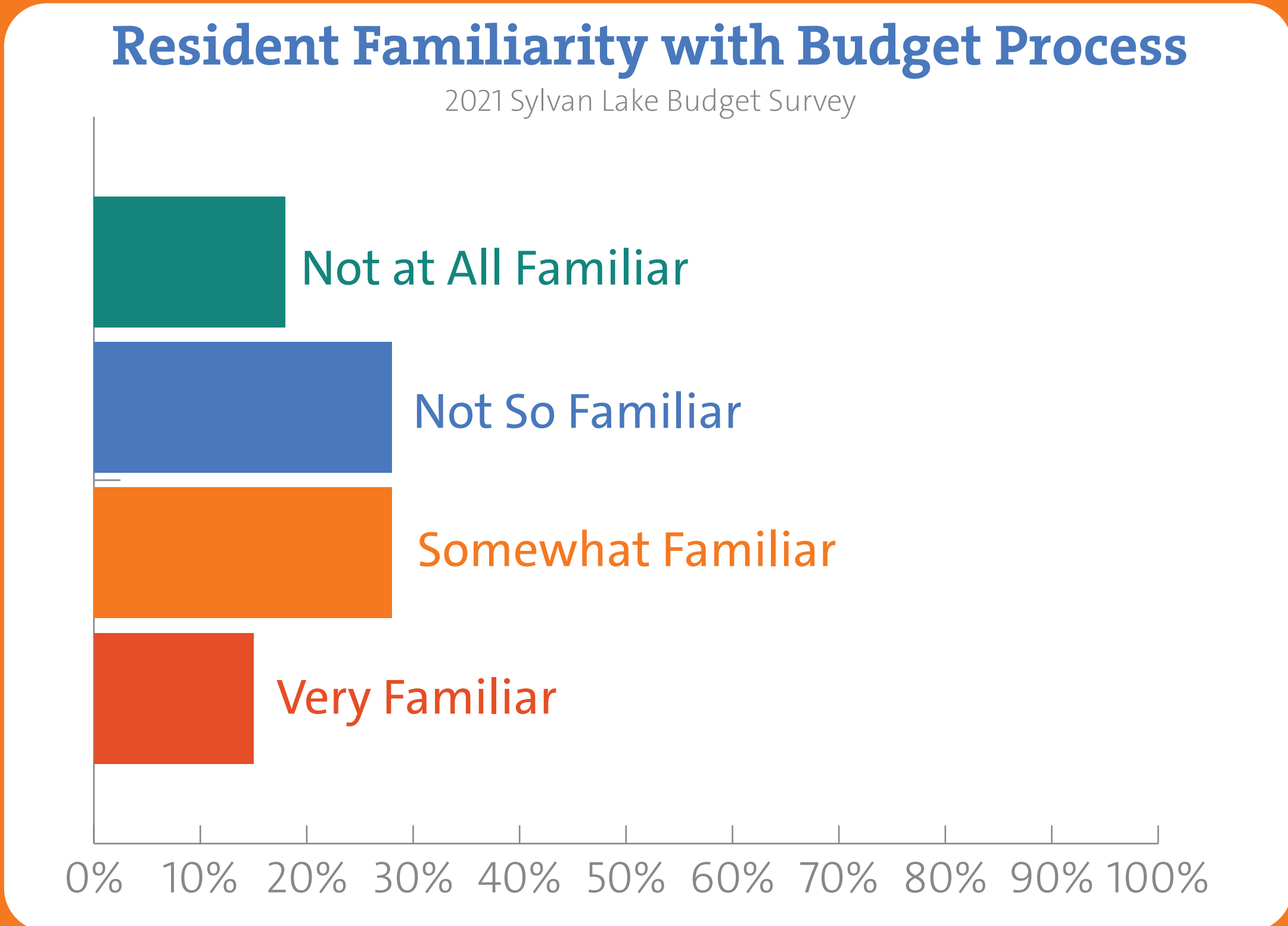
2018 Community Satisfaction Survey



SUBMIT YOUR FEEDBACK NOW!
www.sylvanlake.ca/budget

The Yearly Budget Process

- » Every year, the Town of Sylvan Lake prepares, deliberates, and approves a Three-Year Financial Plan, an annual Operating Budget, and a 10-Year Capital Plan.
- » Resident familiarity with this process varies.

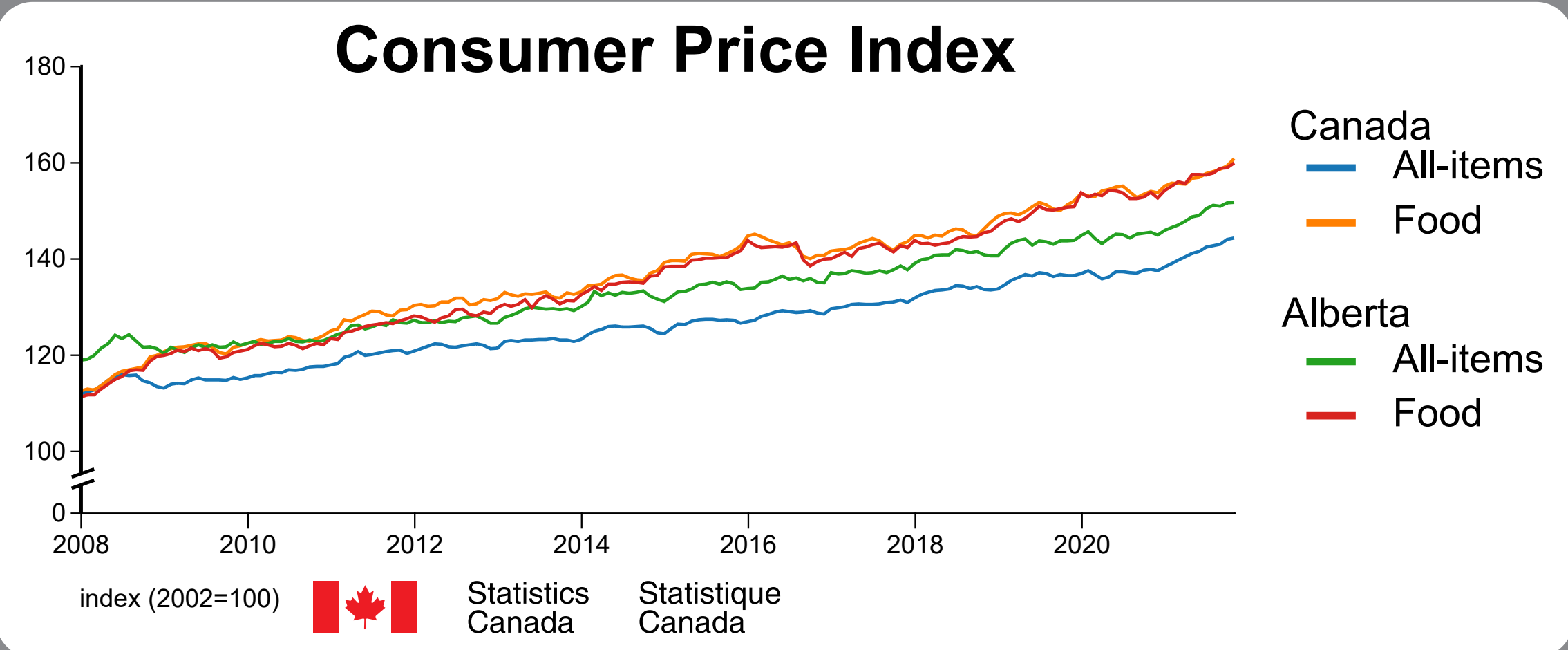


2022 BUDGET HIGHLIGHTS

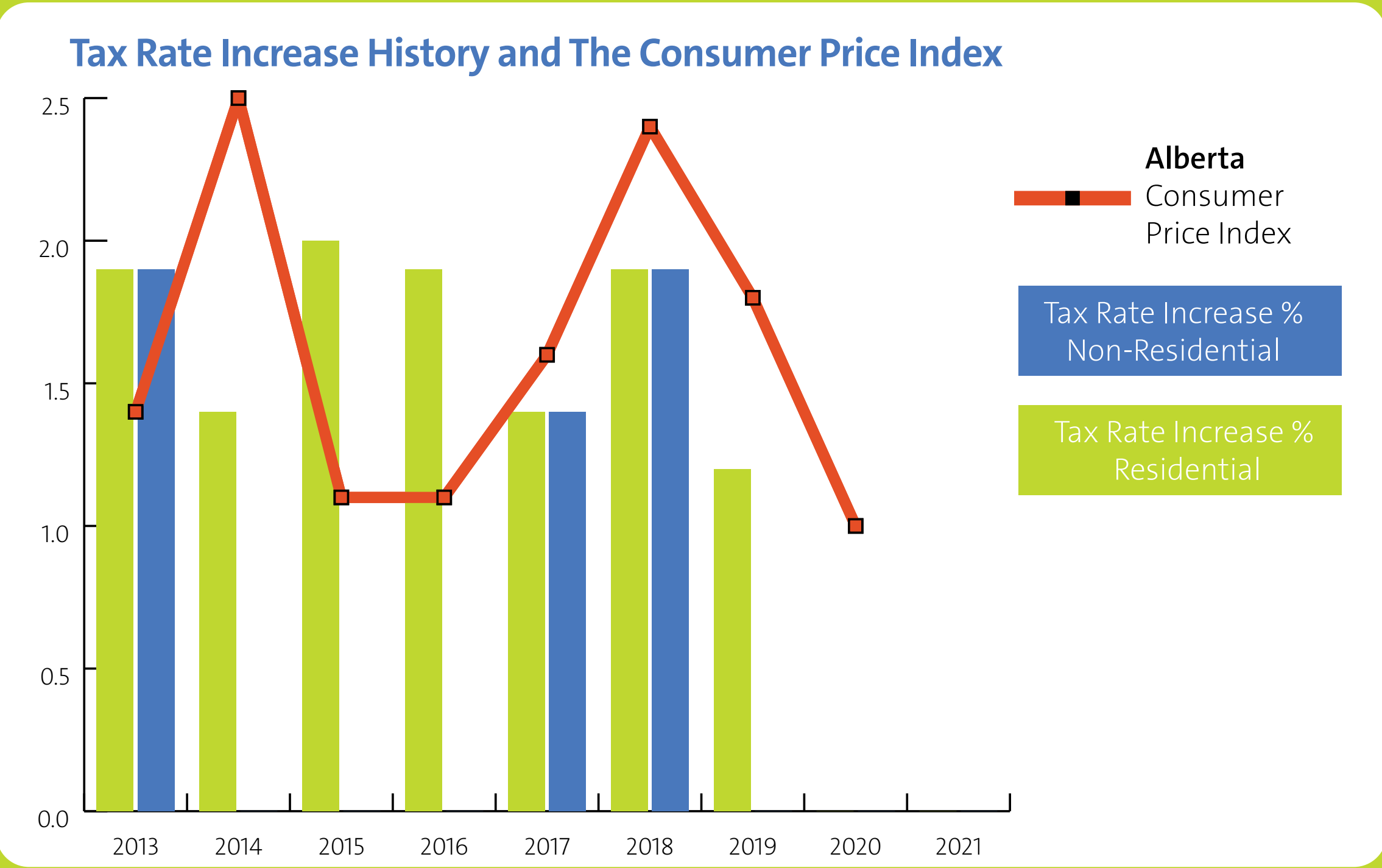


INFLATION AND THE COST OF LIVING

The consumer price index measures the cost of living. Goods and supplies cost more each year. Just like our residents, the Town faces these same cost increases.



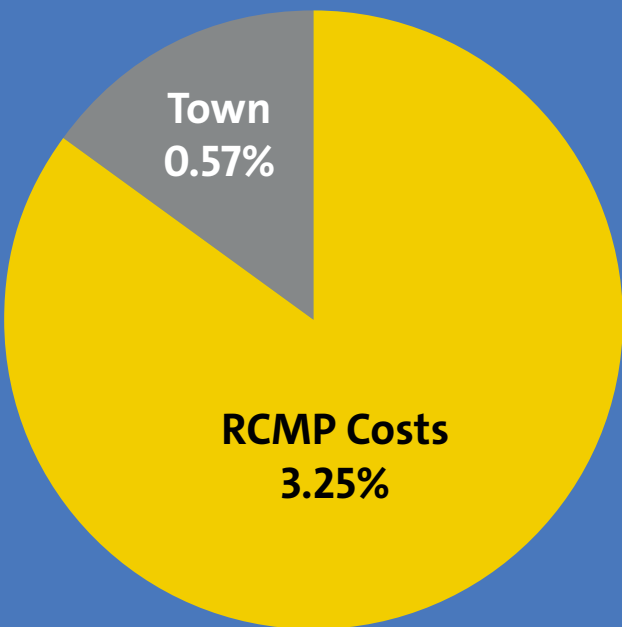
Despite these increases, since 2013, the Town of Sylvan Lake kept the average tax rate increase below the average Consumer Price Index.



INCREASED RCMP COST

Our population is growing!

That means we are required to pay a greater portion of RCMP costs. This increase accounts for 3.25% of the proposed 3.82% tax rate increase.



2022 BUDGET BITS AND BOBS

- » The Government of Alberta is continuing to reduce MSI Capital funding (60% in 2022)
- » No franchise fee increases for natural gas or electricity planned for 2022
- » The recreation levy remains unchanged for 2022
- » The transportation levy increases for 2022 to fund transportation capital projects
- » No inflation adjustments to core budget expenditures for 2022 and 2023
- » Tax Rates are finalized in the spring and may change based on final assessment values
- » Spending freezes put many projects on hold. Some are proceeding, such as traffic calming

2022 CAPITAL PROJECTS ALLOCATION

Capital projects have long-lasting effects on the community, and often represent a value of over \$10,000.



\$1.2 Million in 2022 Capital Projects dedicated to Parks, Playgrounds, and Trails



\$3.35 Million in 2022 Capital Projects dedicated to Road/Transportation



\$300,000 in 2022 Capital Projects dedicated to Sanitary Sewer and Solid Waste, and \$300,000 in 2022 to Projects dedicated to Storm Water

The 10-Year Capital Plan was completed in 2021.

Potential Impact on Typical Properties

The Town of Sylvan Lake is proposing a 3.82% tax rate increase.

As our community continues to grow, sustainability becomes more important than ever. Sustainable environment, sustainable economy, and sustainable governance is possible when we commit to community engagement, fiscal responsibility and effectiveness, efficient service delivery, and collaboration.

How Much More Does the Average Residential Property Owner Pay?

- The 2022 increase is, • \$6.50 per month • \$1.50 per week • \$0.21 per day on average \$78, or

	2021	2022
Assessed Value	\$350,000	\$350,000
Municipal Tax Rate Change	0%	3.82%
Municipal Property Taxes	\$2,010	\$2,087
Transportation Levy	\$67	\$68
Recreation Levy	\$128	\$128
Average Total	\$2,205	\$2,283
Total Change		\$78

*Excludes potential change to Provincial Education Tax, which is announced in the spring of each year.

2022 BUDGET HIGHLIGHTS



UTILITY RATES: WATER, WASTEWATER & SOLID WASTE

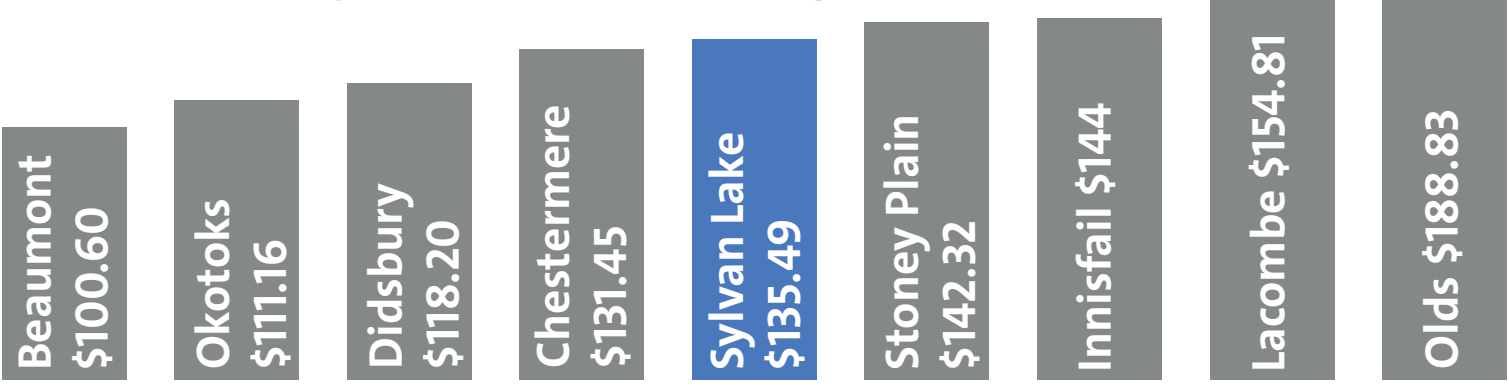
Water and sewer utility costs are funded by your utility bill, not your property taxes.

- Utility fees are only used towards management, maintenance, and operation of utility-based infrastructure
- **Property Taxes are not used for utility costs or projects**
- To cover any gaps between expenses and utility fees, the Town uses grant funding, borrowing, and development levies associated with water and sewer infrastructure for new or repaired utility infrastructure

HOW OUR RATES COMPARE?

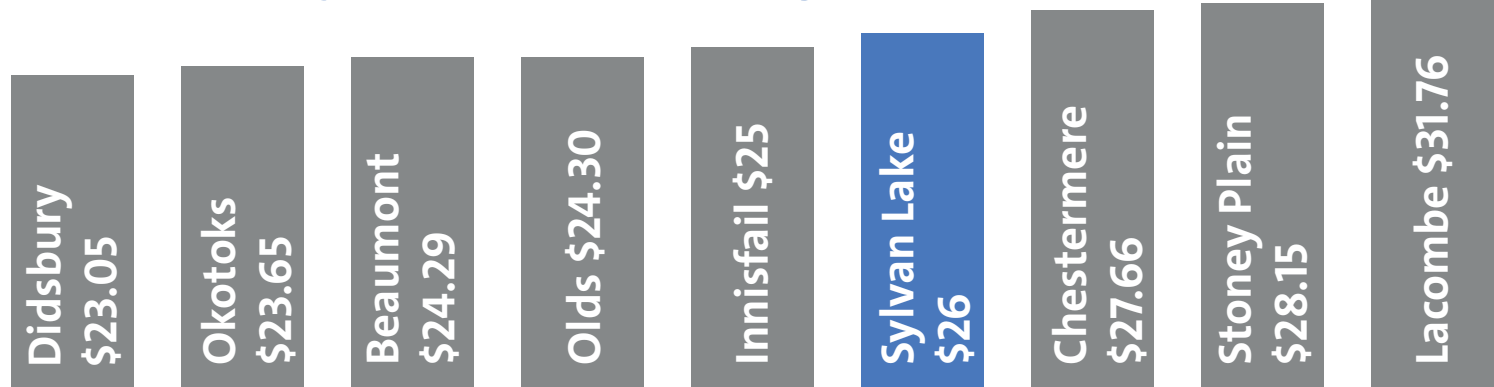
Water/Wastewater

2021* monthly water and sewer charges in other communities, compared to Sylvan Lake's 2022 charges.



Solid Waste (yard/kitchen waste/recycling/garbage)

2021* monthly solid waste in other communities, compared to Sylvan Lake's 2022 charges.



Fee Changes for 2022

- A utility rate increase is planned for 2022. Goods and supplies cost more each year. Just like our residents, the Town faces these same cost increases
- Assuming 20 cu/m consumption per month, an average monthly utility bill is \$161.49 (2021: \$153.49).
 - Water Flat Rate \$38.67 (2021: \$37.91)
 - Water Consumption \$17 (2021: \$16)
 - Sewer Flat Rate \$24.82 (2021: \$24.33)
 - Sewer Collection \$55 (2021: \$50)
 - Solid Waste 240 L Cart \$19.50 (2021: \$19)
 - Solid Waste 360 L Cart \$29 (2021: \$28.50)
 - Recycling \$6.50 (2021: \$6.25)



How Much More Does the Average Resident Property Owner Pay on Their Utility Bill?

The 2022 increase is, on average, \$96, or:

- \$8.00 per month
- \$1.84 per week
- \$0.26 per day

3.82% tax rate increase | \$41,900,445 operating budget | \$9,959,000 capital budget

2022 PROPERTY TAX USAGE

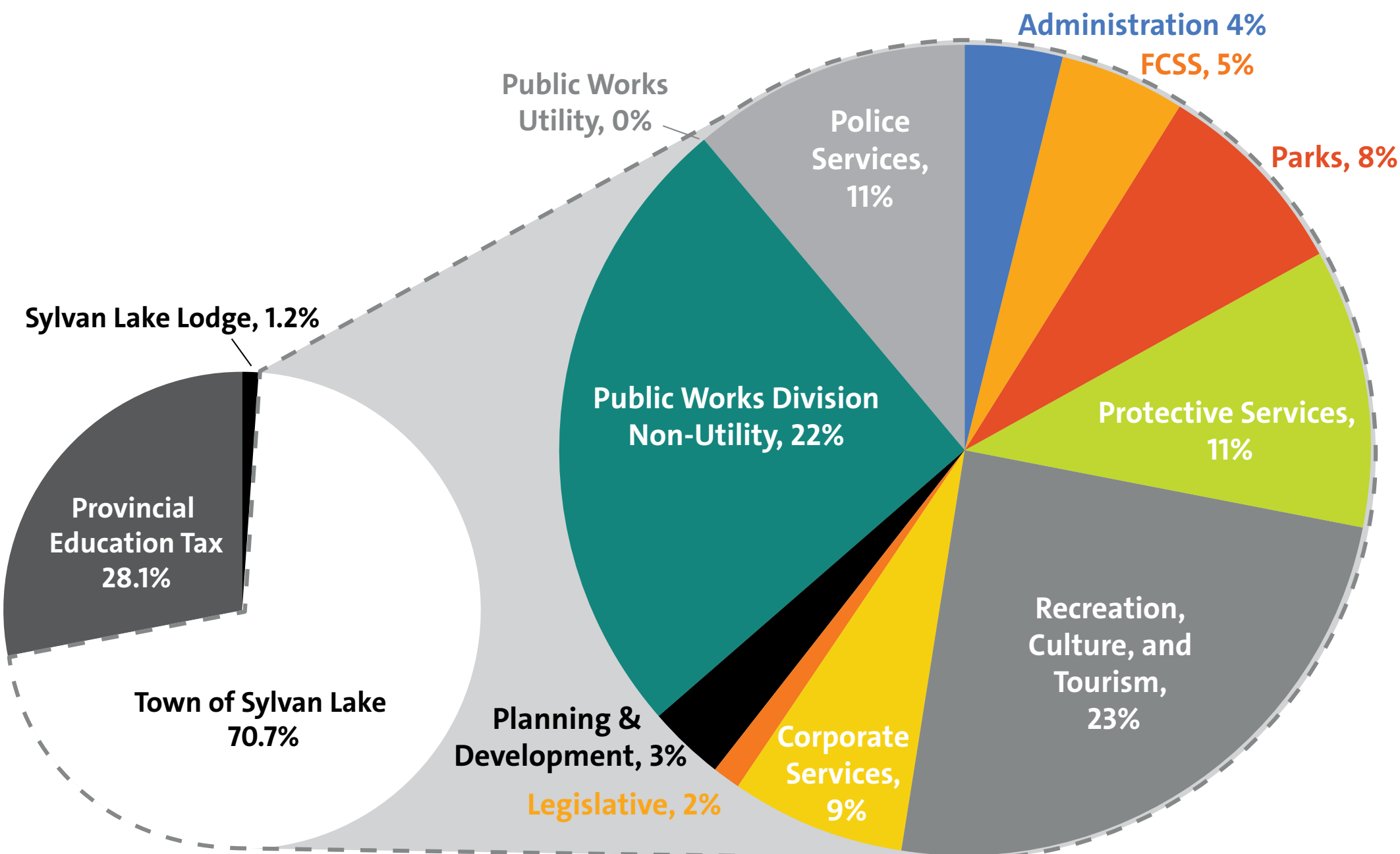
Both a Municipal, and Utility Budget exist. Property taxes fund the municipal operating budget, while utility fees fund utility-based budgets and capital projects. The 2022 Municipal Budget proposes a 3.82% residential and business tax rate increase.

HOW PROPERTY TAX DOLLARS ARE ALLOCATED

Only about 70% of your property taxes fund the municipality. The town's portion is roughly 70% of your property tax bill. The rest is for:

- Alberta Education Tax, and
- Sylvan Lake Lodge Foundation (affordable seniors housing).

How tax dollars fund each municipal department



STRATEGIC PLANNING

In spring 2022, Council gathers for a strategic planning session to set community priorities for the next four years.

Pay Parking Revenue

Based on resident/business feedback, Visitor Pay Parking program fees are set to increase in 2022. Fees ensure visitors contribute to waterfront maintenance and upgrades.

- » Day parking increases from \$15/day to \$20/day
- » Hourly remains at \$4/hour

Increased fees are projected to generate an additional \$200,000 in revenue