

Traffic Interruption and Detour Plan

50 Avenue Redevelopment 49 Street – 45 Street

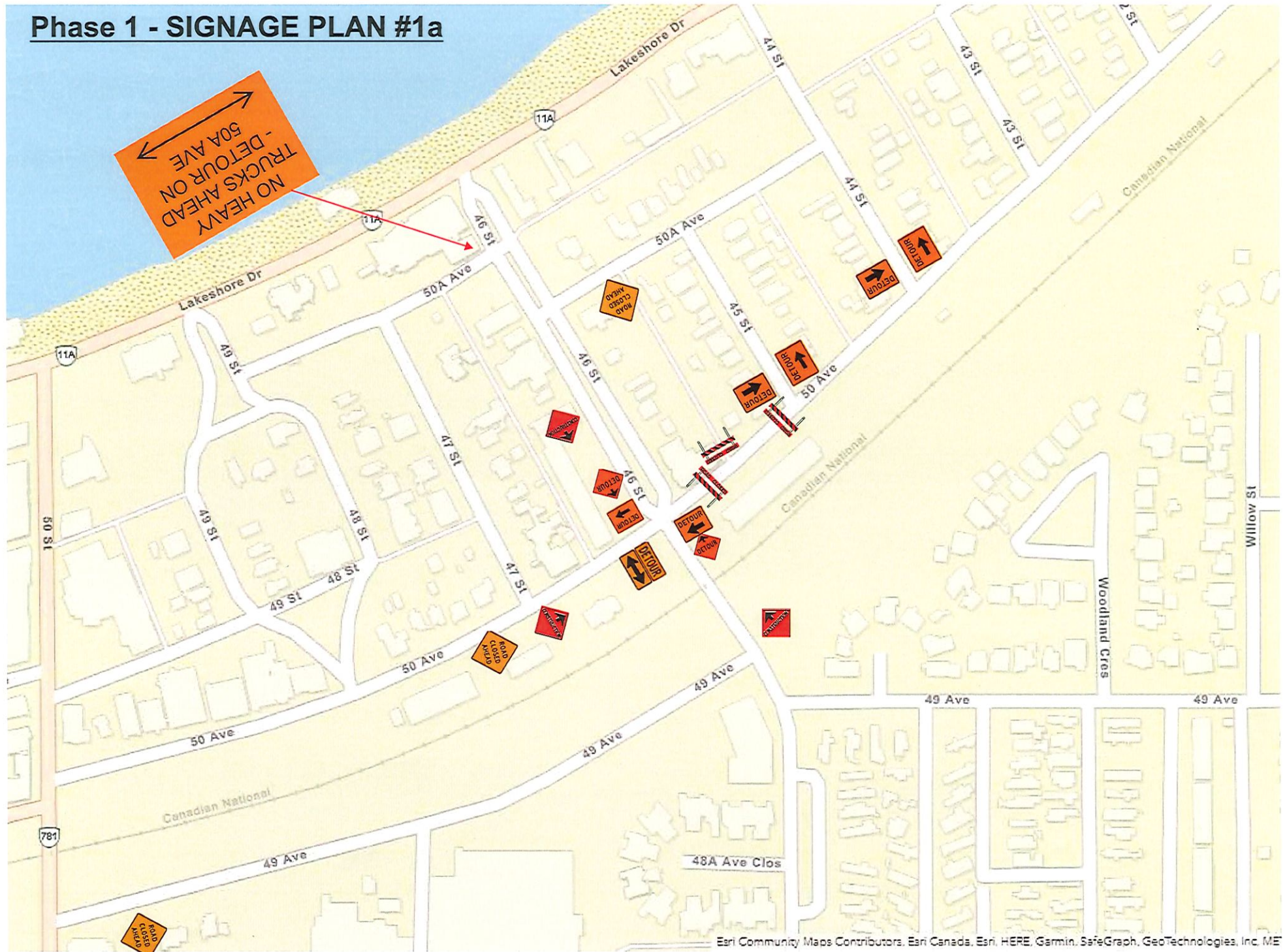


This plan details how we are minimizing interruptions to downtown businesses, traffic, and visitors.

OVERALL SIGNAGE PLAN



Phase 1 - SIGNAGE PLAN #1a



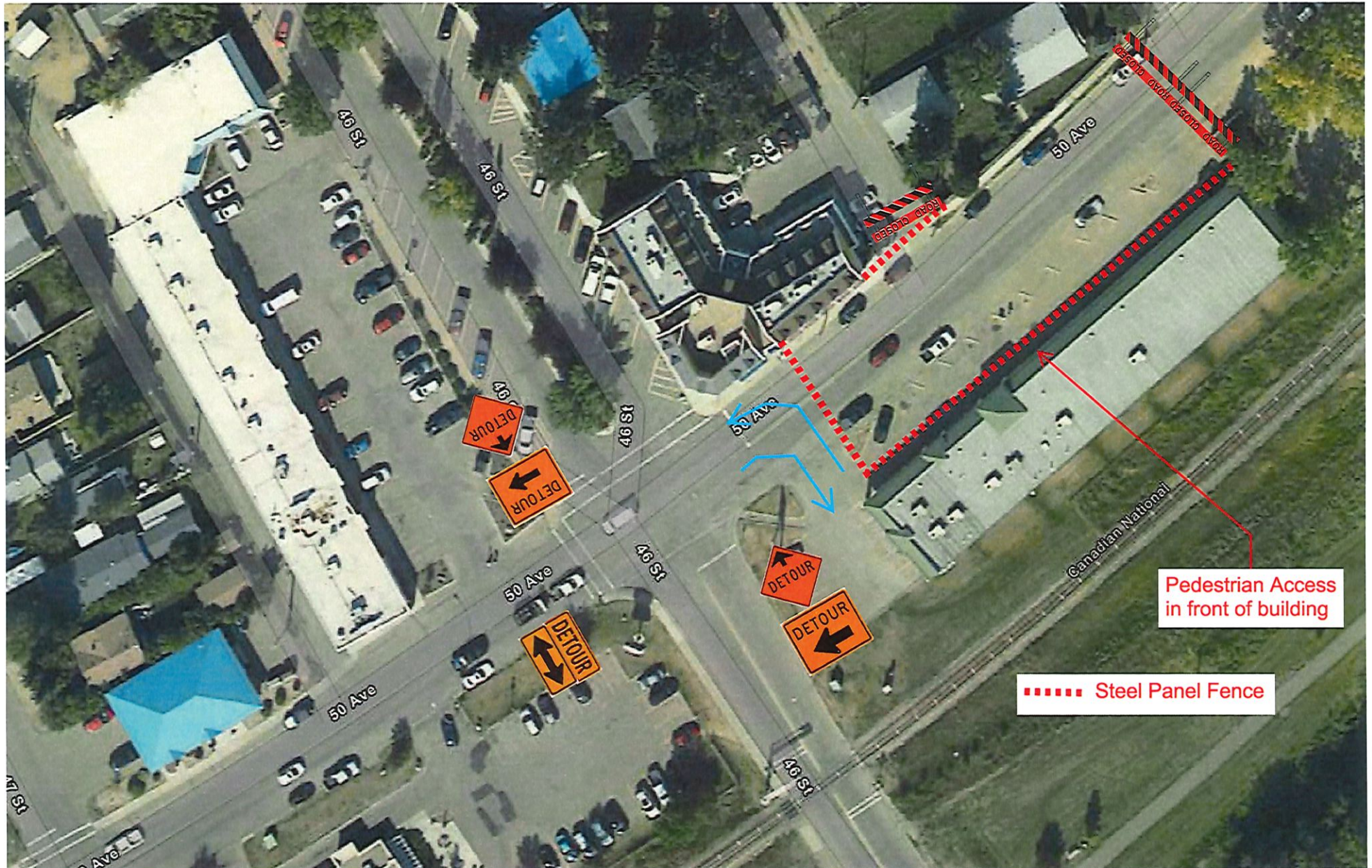
Haul Route - Clay

Route to used for hauling the following:

- Import clay to the site
- Export waste clay from the site



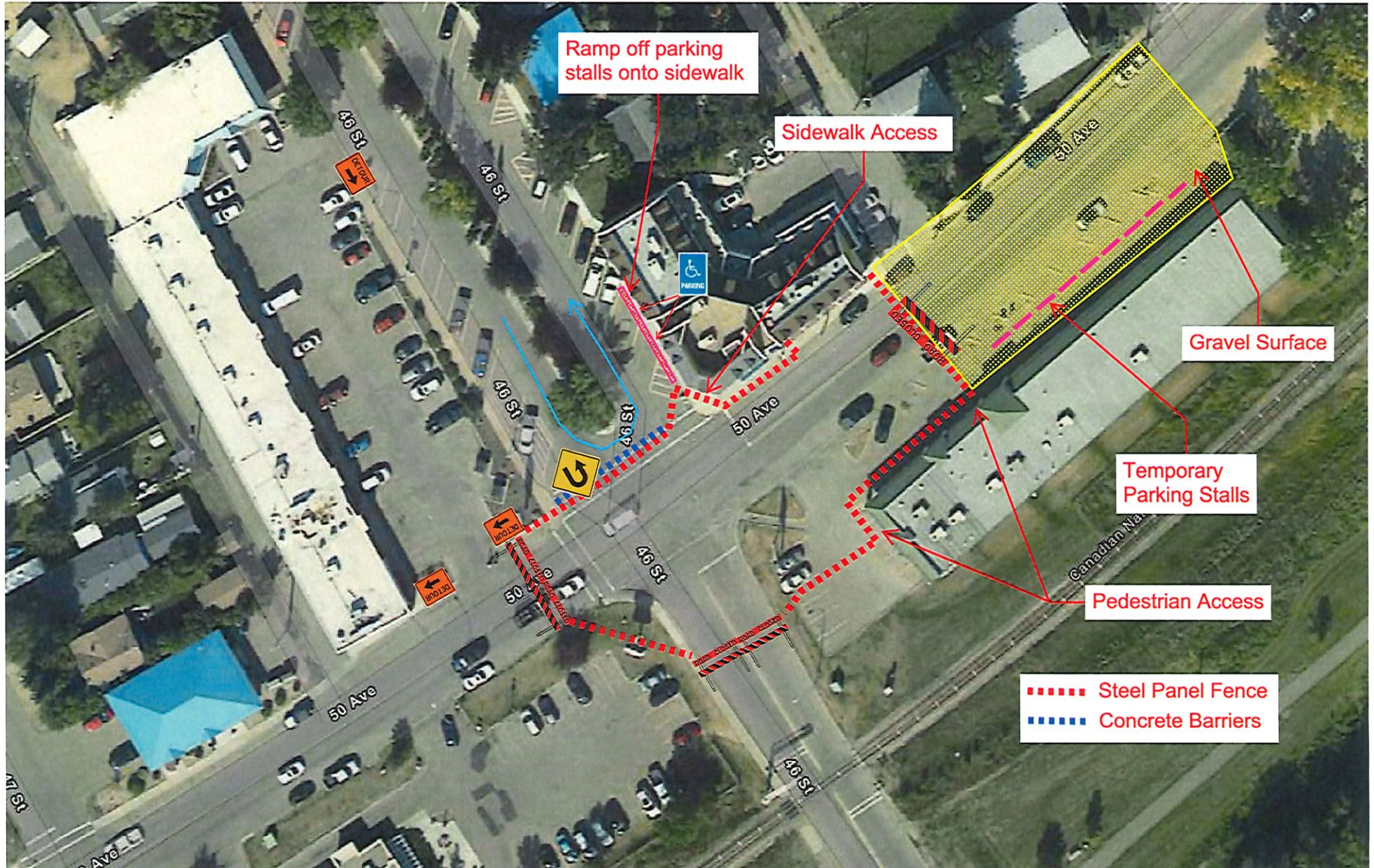
Phase 1 - SIGNAGE PLAN #1b



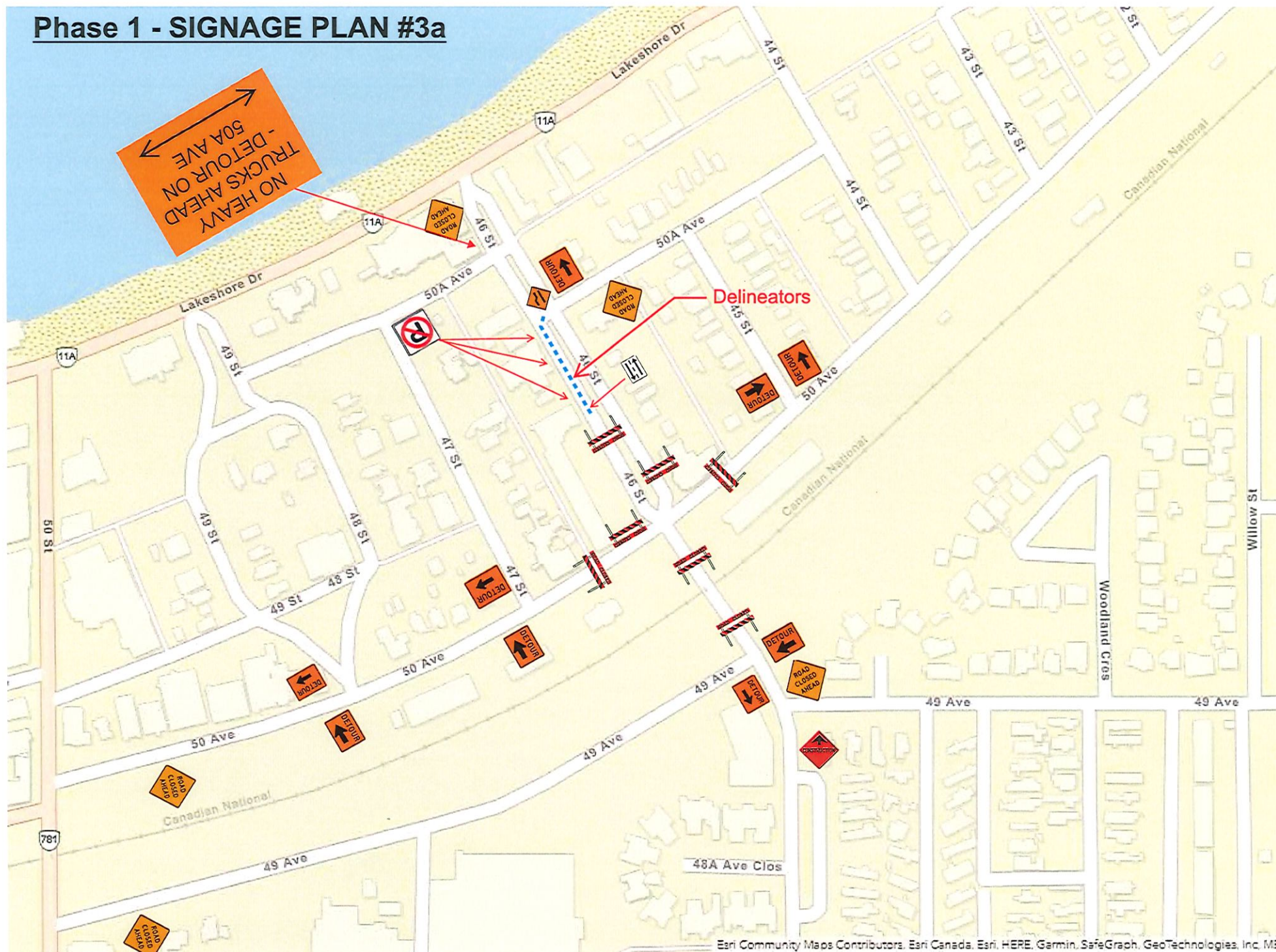
Phase 1 - SIGNAGE PLAN #2a



Phase 1 - SIGNAGE PLAN #2b



Phase 1 - SIGNAGE PLAN #3a



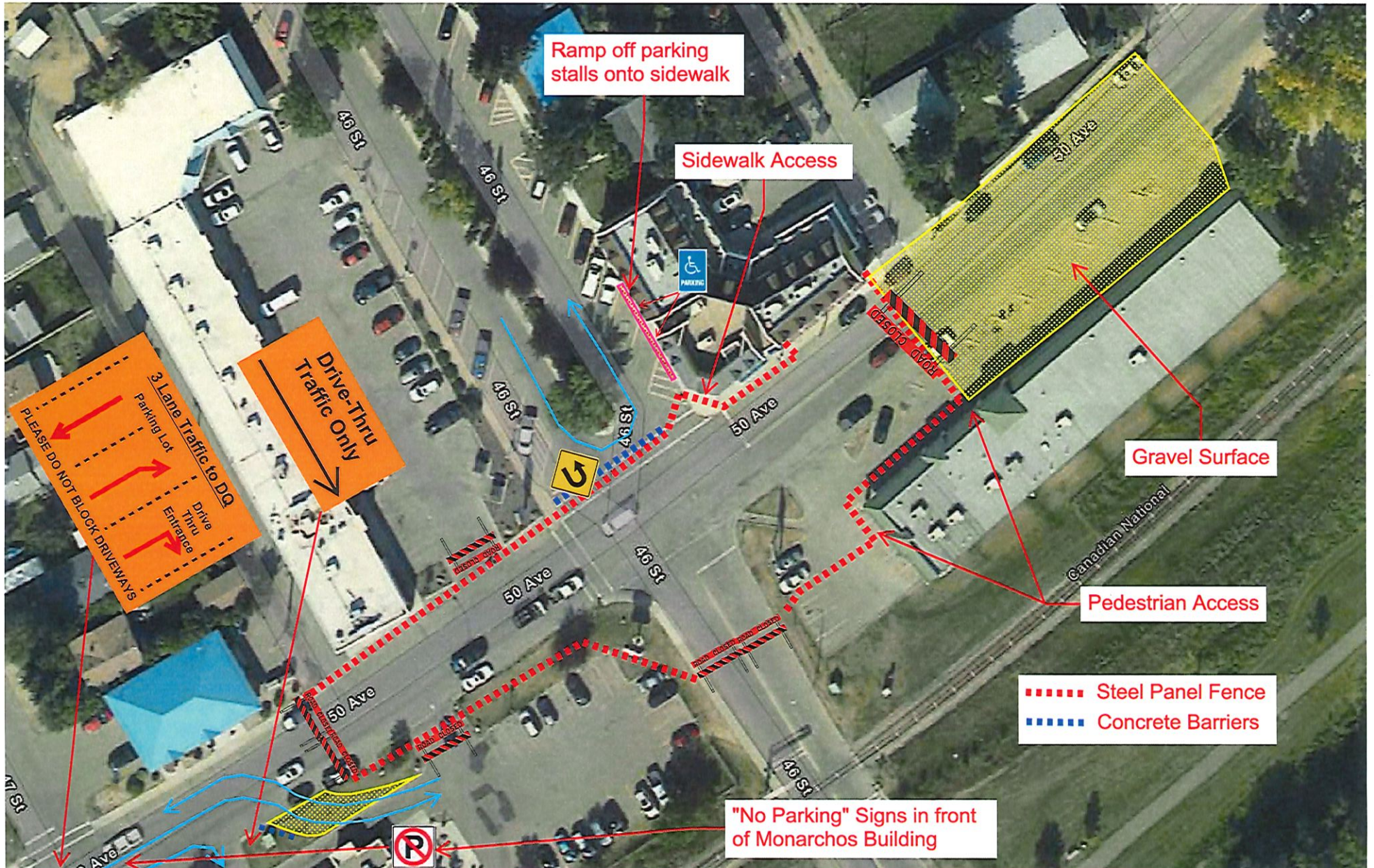
This aerial photograph shows a construction site on 50 Ave and 46 St. The site is outlined in yellow and labeled "Gravel Surface". A "Gravel Ramp for Parking Lot Access" is shown on the left. A "Pedestrian Access" path is marked with a red dotted line. A "Temporary Parking Stalls" area is also indicated. The site is surrounded by residential buildings and parking lots. Various signs are visible, including "No Parking" signs, "Detour" signs, and "Drive-Thru" signs. A "Delinquent" sign is also present. The image includes a legend for "Steel Panel Fence" (red dotted line) and "Gravel Surface" (yellow outline). A "Drive-Thru" sign is also visible. A "Delinquent" sign is also present. The image includes a legend for "Steel Panel Fence" (red dotted line) and "Gravel Surface" (yellow outline).

Delineators

Phase 1 - SIGNAGE PLAN #4a



Phase 1 - SIGNAGE PLAN #4b



Phase 2 - SIGNAGE PLAN #1

This map illustrates the signage plan for Phase 2 of a project, showing road closures and the placement of various traffic signs. The map includes the following details:

- Geographic Features:** A blue area representing a lake is located in the top left corner. A yellow dotted area, likely a park or undeveloped land, runs along the top edge.
- Streets:** The map shows a grid of streets including Lakeshore Dr, 50 Ave, 49 Ave, 48 Ave, 47 Ave, 46 Ave, 45 Ave, 44 Ave, 43 Ave, 42 Ave, 41 Ave, 40 Ave, 39 Ave, 38 Ave, 37 Ave, 36 Ave, 35 Ave, 34 Ave, 33 Ave, 32 Ave, 31 Ave, 30 Ave, 29 Ave, 28 Ave, 27 Ave, 26 Ave, 25 Ave, 24 Ave, 23 Ave, 22 Ave, 21 Ave, 20 Ave, 19 Ave, 18 Ave, 17 Ave, 16 Ave, 15 Ave, 14 Ave, 13 Ave, 12 Ave, 11 Ave, 10 Ave, 9 Ave, 8 Ave, 7 Ave, 6 Ave, 5 Ave, 4 Ave, 3 Ave, 2 Ave, 1 Ave, and 0 Ave.
- Highways:** Highway 11A is shown running horizontally across the top, and Highway 781 is shown running vertically on the left side.
- Signage:** Several orange and red signs are placed on the map, including "ROAD CLOSED AHEAD", "ROAD CLOSED", "DETOUR", and "ONE WAY".
- Other Features:** A red arrow points to a specific location on the map. A red and white striped barrier is shown blocking off a section of the road.

Map data provided by Esri Community Maps Contributors, Esri Canada, Esri, HERE, Garmin, SafeGraph, GeoTechnologies, Inc.

Phase 2 - SIGNAGE PLAN #2



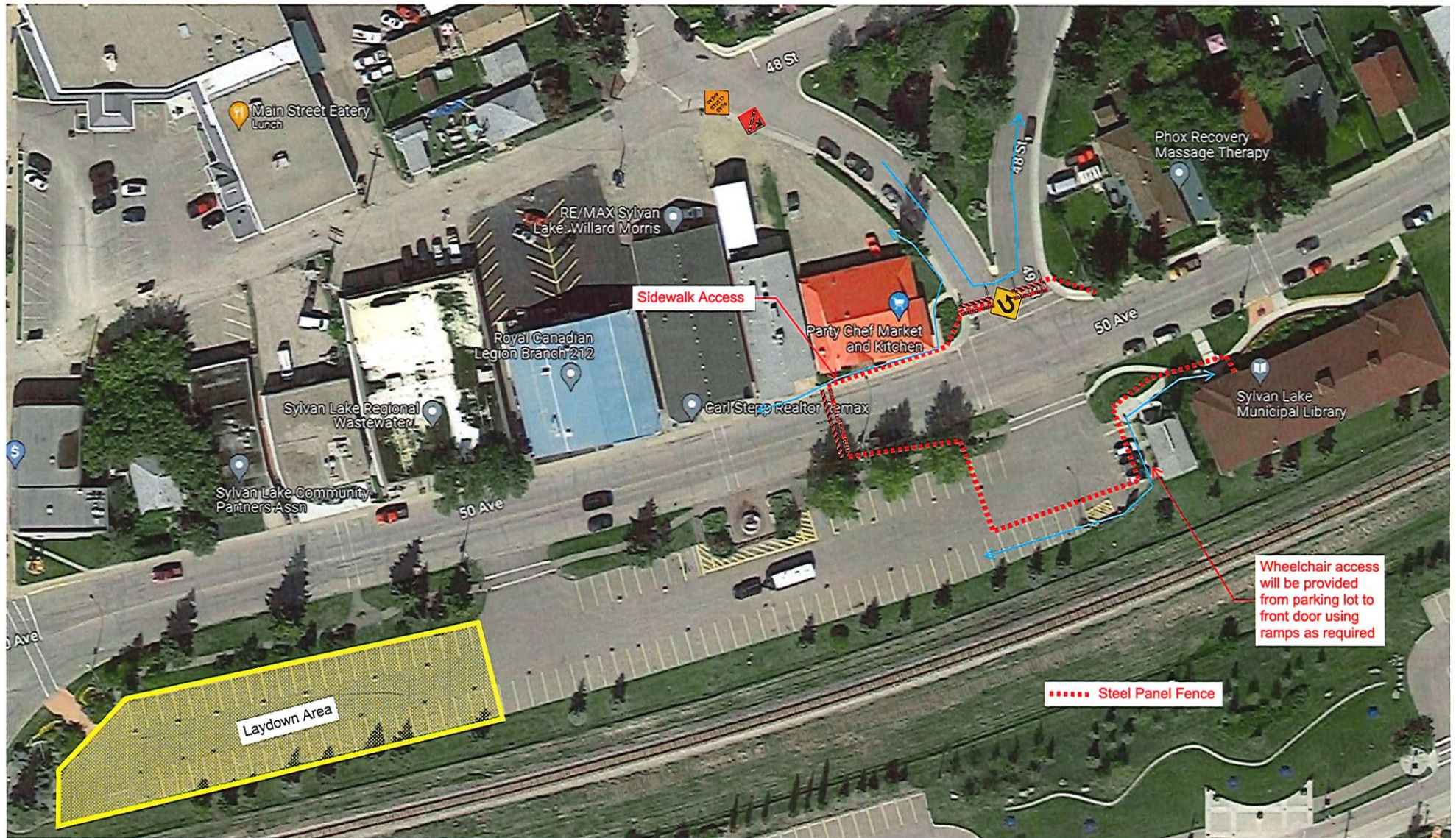
Phase 3 - SIGNAGE PLAN #1

50 Ave Closed Between 49 Street and 47 Street - Find Alternate Route

Map details include: Lakeshore Dr, 11A, 49 St, 48 St, 47 St, 46 St, 45 St, 44 St, 43 St, 50 Ave, 49 Ave, 48 Ave, 47 Ave, 46 Ave, 45 Ave, 44 Ave, 43 Ave, 42 Ave, 41 Ave, 40 Ave, 39 Ave, 38 Ave, 37 Ave, 36 Ave, 35 Ave, 34 Ave, 33 Ave, 32 Ave, 31 Ave, 30 Ave, 29 Ave, 28 Ave, 27 Ave, 26 Ave, 25 Ave, 24 Ave, 23 Ave, 22 Ave, 21 Ave, 20 Ave, 19 Ave, 18 Ave, 17 Ave, 16 Ave, 15 Ave, 14 Ave, 13 Ave, 12 Ave, 11 Ave, 10 Ave, 9 Ave, 8 Ave, 7 Ave, 6 Ave, 5 Ave, 4 Ave, 3 Ave, 2 Ave, 1 Ave, 0 Ave.

Esri Community Maps Contributors, Esri Canada, Esri, HERE, Garmin, SafeGraph, GeoTechnologies, Inc, ME

Phase 3 - SIGNAGE PLAN #2



Haul Route - Aggregate

Route to used for hauling the following:

- Import Aggregate to the site
- Millings and existing gravel base to the Town yard



Phase 3 - SIGNAGE PLAN #3

