

## **Memorial Trail Upgrades**

# **Welcome**

Learn about the project and share your input on  
the proposed Memorial Trail Upgrades

Learn about the project by visiting: **[sylvanlake.ca/communications](https://sylvanlake.ca/communications)**

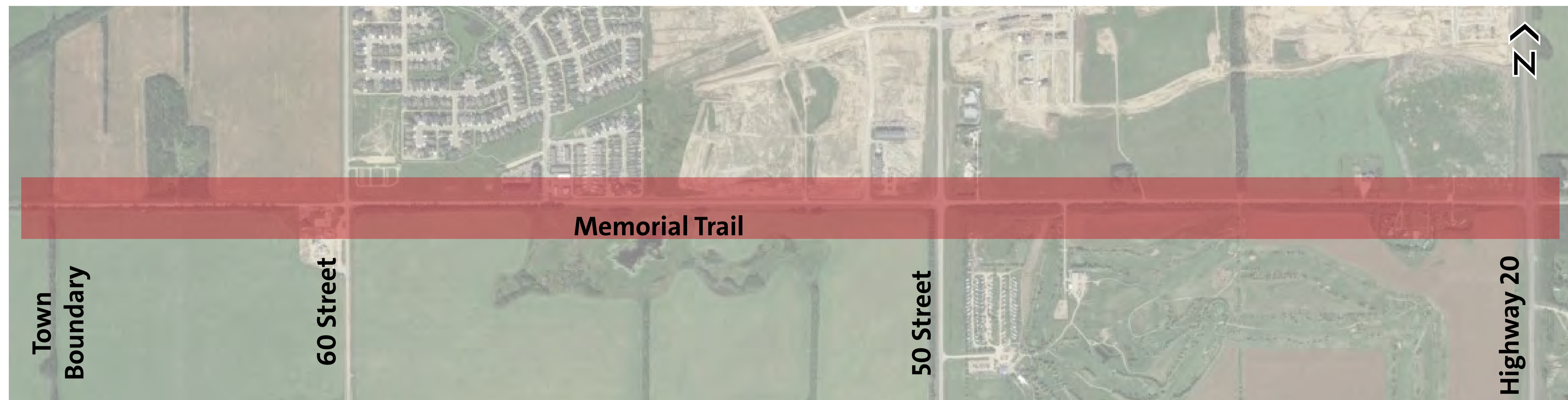


# Project Overview

The Memorial Trail Upgrades study area covers Memorial Trail between Pogadl Park and Highway 20. The study aims to better accommodate and improve safety for all types of travel. This includes continuous multi-use pathways, and roundabouts at intersections along the study area.

As part of this project, short-, medium-, and long-term functional plans have been developed for the study area to allow improvements to be implemented over time to accommodate travel and development growth.

## Study Area Map



# Project Timeline

## Fall 2020

Gathered community feedback through an online survey that identified transportation opportunities and concerns for the Transportation Master Plan (TMP)

## Summer 2021

Presented cross-section and roundabout concepts to Council. Council selected a preferred cross-section and two roundabout concepts for further consideration in the Functional Plan

## Winter / Spring 2021

Gathered and reviewed background project information, developed and evaluated roundabout and cross-section concepts

## Fall 2021

Present the long-, medium- and short-term functional plans to the community. Review feedback to refine and finalize the Functional Plan

**WE ARE HERE**

# Community Engagement

In September 2020, the Town posted an online survey asking residents to identify their transportation concerns, experiences, or ideas. Participants could use a social mapping tool to place a pin and comment throughout the Town, as well as respond to a question specifically about the intersection of Memorial Trail at 50 Street.

## Some of the key themes that emerged in the feedback about Memorial Trail included:



Concerns about driver sightlines and congestion at the intersections of Memorial Trail at Highway 20 and 50 Street.

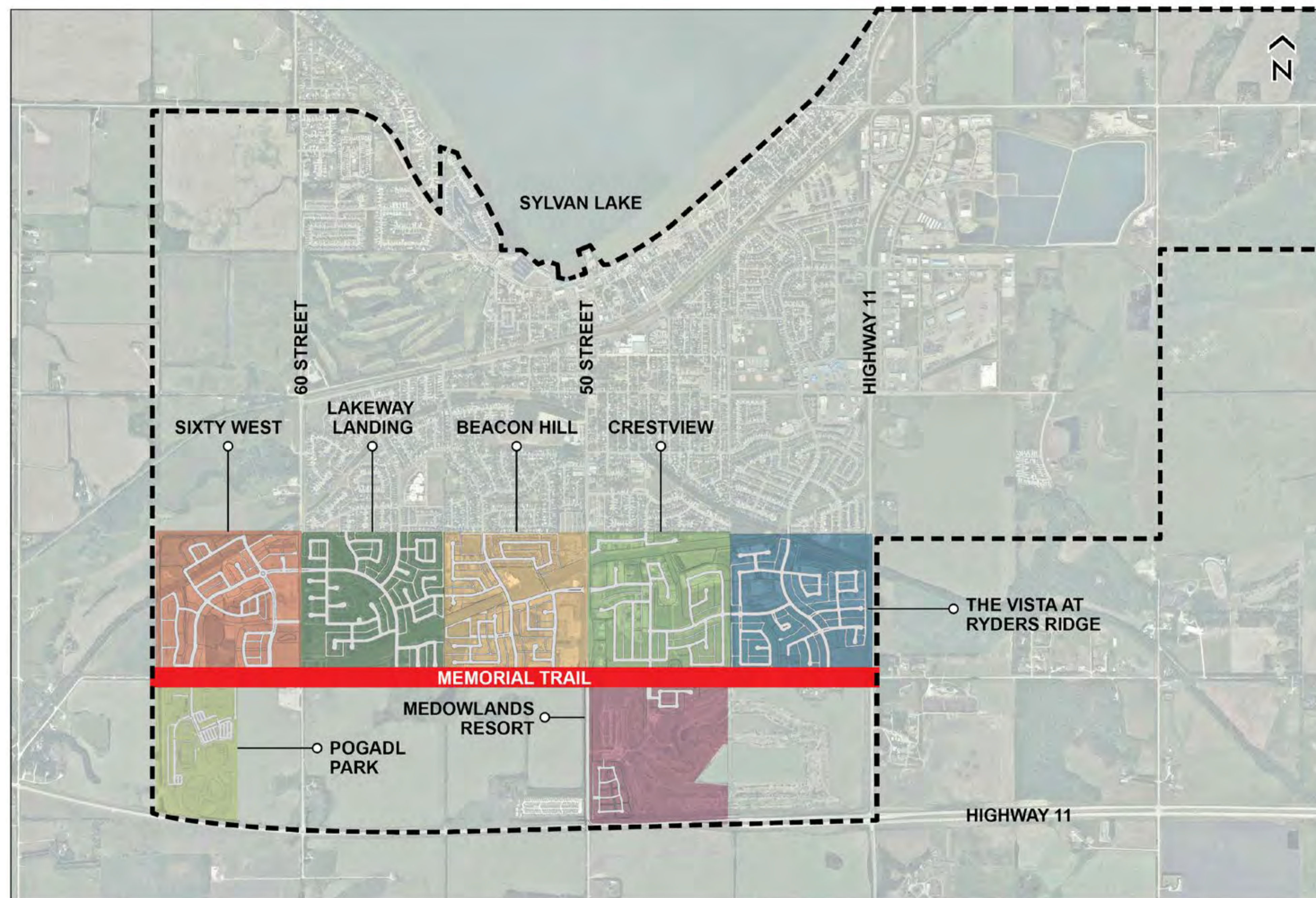


Suggestions for controlled intersections along Memorial Trail



Suggestions for a pathway along Memorial Trail connecting to community destinations and other pathways

# How will the project tie into the future roadway network?

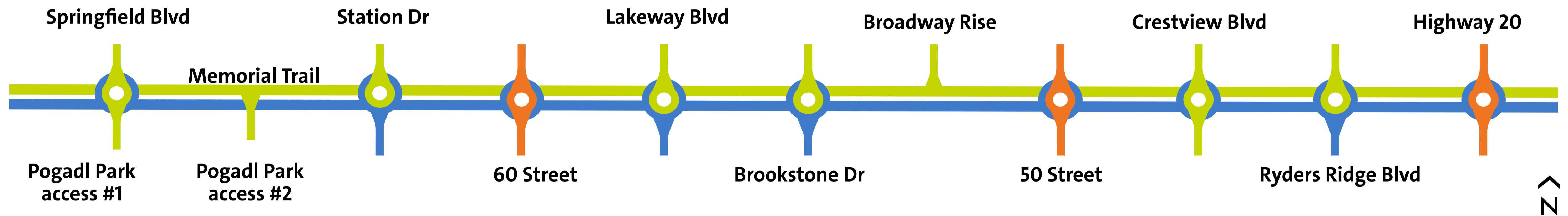


This map shows the future roadway network as detailed in each approved Outline Plan in the area adjacent to the project. The project area is shown in the red box.

Each Outline Plan is coloured and labeled. An Outline Plan is a planning document that focuses on a small section of land, showing how an area will be developed.

The future roadways shown in grey within each Outline Plan indicate where future development will access Memorial Trail.

# Staging Plan



## Short-term Plan.

One eastbound and one westbound lane maintained on Memorial Trail. Single lane roundabouts on Memorial Trail at the intersections at Highway 20, 50 Street and 60 Street.

## Medium-term Plan.

One eastbound and one westbound lane maintained on Memorial Trail. Single lane roundabouts at each intersection. Landscaped boulevard and multi-use pathway parallel to and on the north side of Memorial Trail.

## Long-term Plan.

Two eastbound and two westbound lanes on Memorial Trail separated by a median. Two northbound and two southbound lanes on Highway 20, 50 Street and 60 Street. Dual lane roundabouts at each intersection. Landscaped boulevards and multi-use pathways parallel to and on both sides of Memorial Trail.

# Short-term Plan

In the short-term, single lane roundabouts will improve traffic flow and turning on Memorial Trail at 60 Street, 50 Street, and Highway 20. These roundabouts will tie into the existing two-lane undivided roadways. All existing driveways are maintained with no turn restrictions. The construction timing of the three roundabouts is anticipated to be in the next 10 years.

## 60 Street



## 50 Street



## Highway 20



The following four boards show the details of the medium- and long-term plans. Memorial Trail has been sectioned into three parts: the west section, central section, and east section. Future roads are shown in light grey as per the approved Outline Plans, and may change as development occurs.

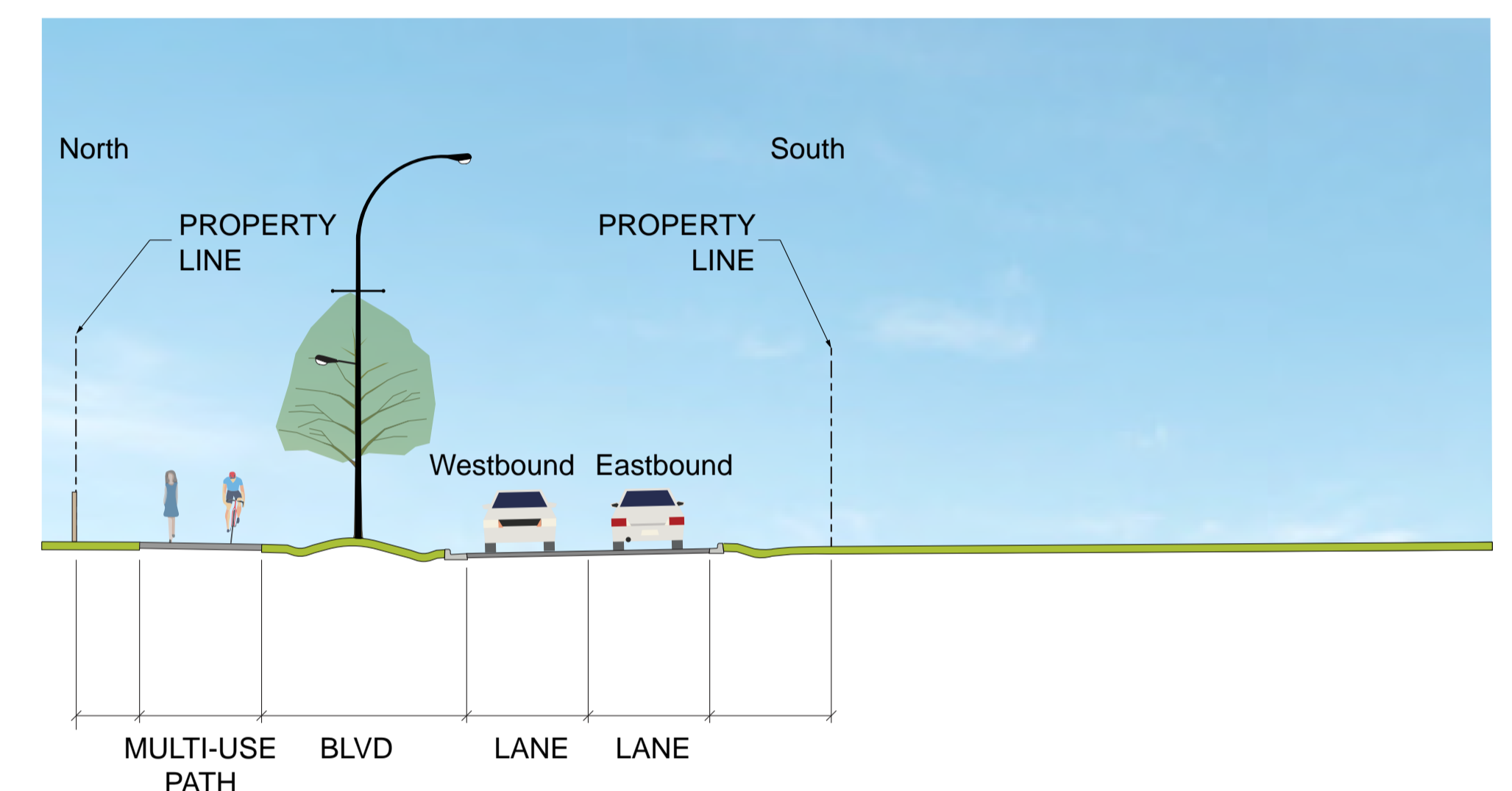
## Medium-term Plan

In the medium-term, Memorial Trail will remain as a two-lane roadway. Existing intersections will be upgraded and new intersections established as development continues to expand north of Memorial Trail. Single-lane roundabouts will be constructed at most intersections. These upgrades will improve safety and accommodate growing traffic volumes along Memorial Trail. Existing driveways with direct access to Memorial Trail will be maintained or realigned where required.

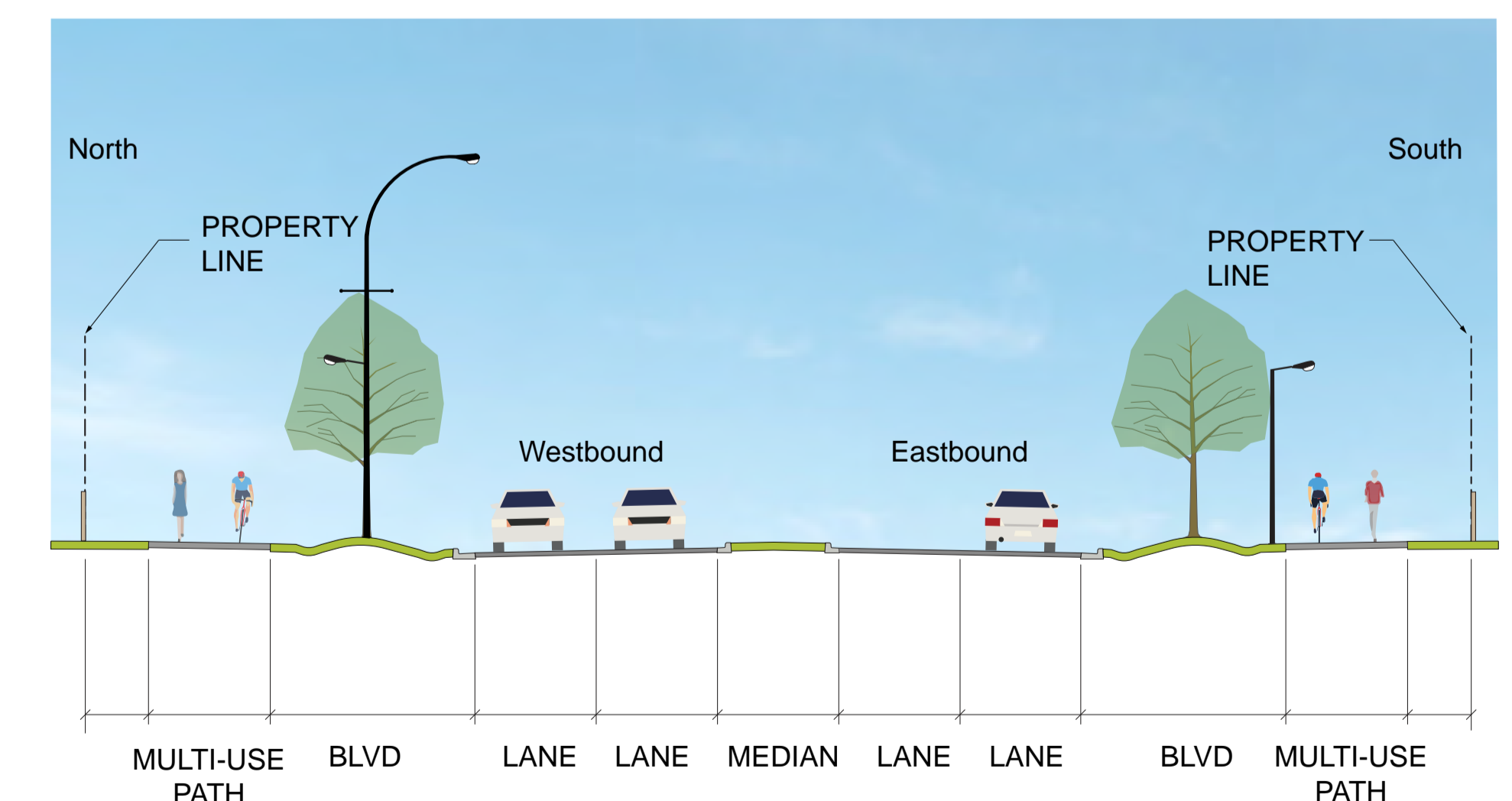
## Long-term Plan

In the long-term, Memorial Trail will be widened to the south to provide a total of 4 lanes and new roadways will be extended to the south as development expands south of Memorial Trail. Roundabouts will be upgraded to dual-lanes to accommodate growing traffic volumes. In the long-term, direct access will be provided at the intersections shown below. Existing driveways with direct access to memorial Trail will be closed as development occurs.

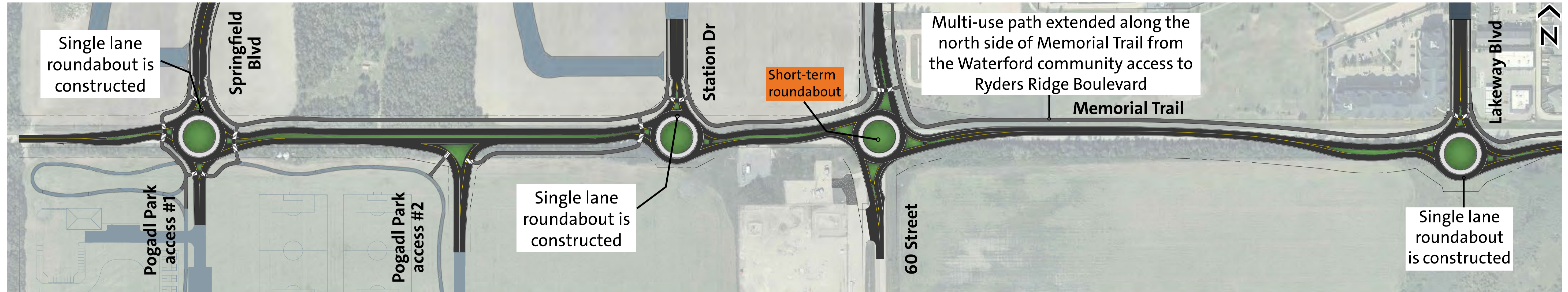
**Medium-term cross-section**



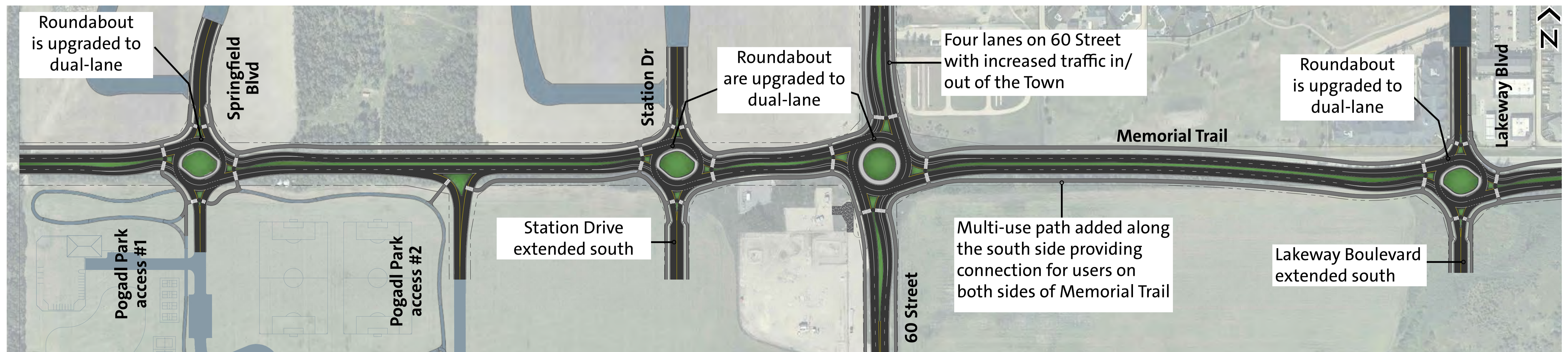
**Long-term cross-section**



# Medium-term Plan - West Section

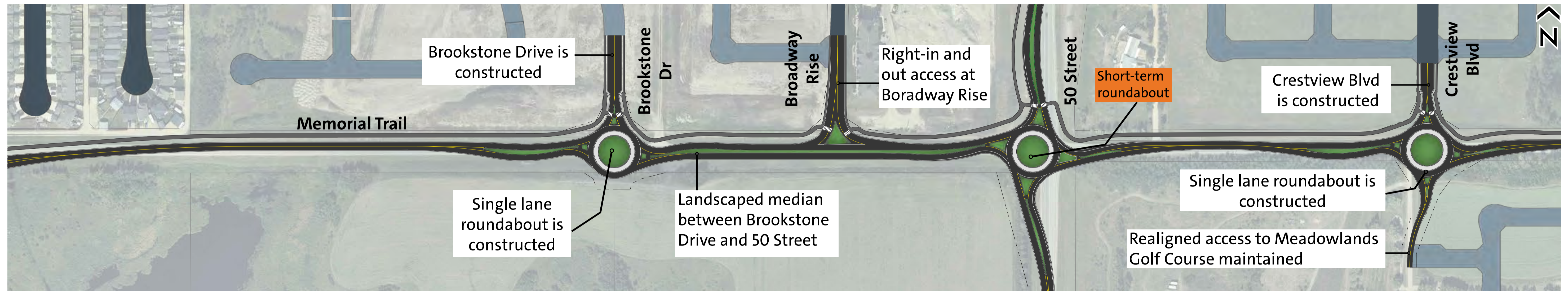


# Long-term Plan - West Section

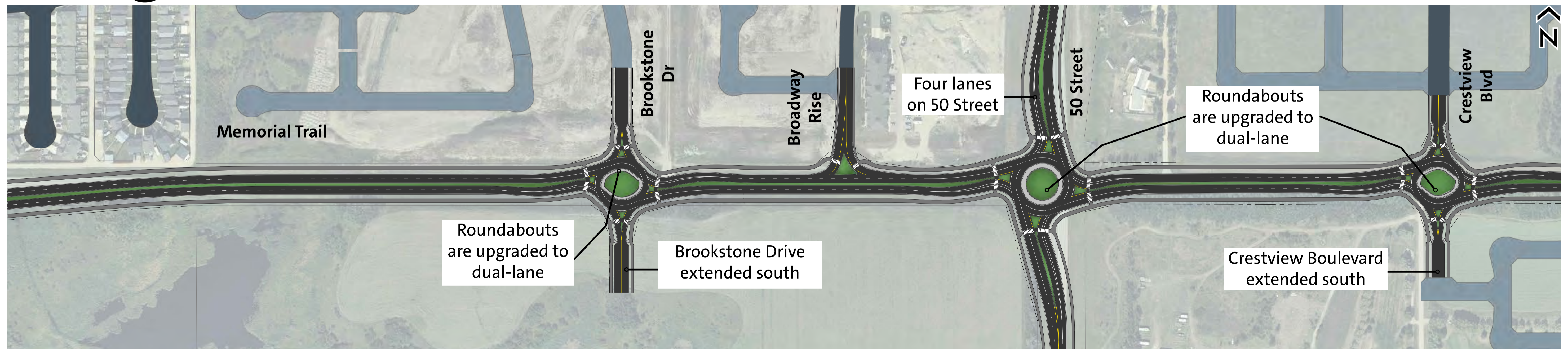


Note: Future roads are shown in light grey as per the approved outline plans. Newly built roads are in dark grey.

# Medium-term Plan - Central Section

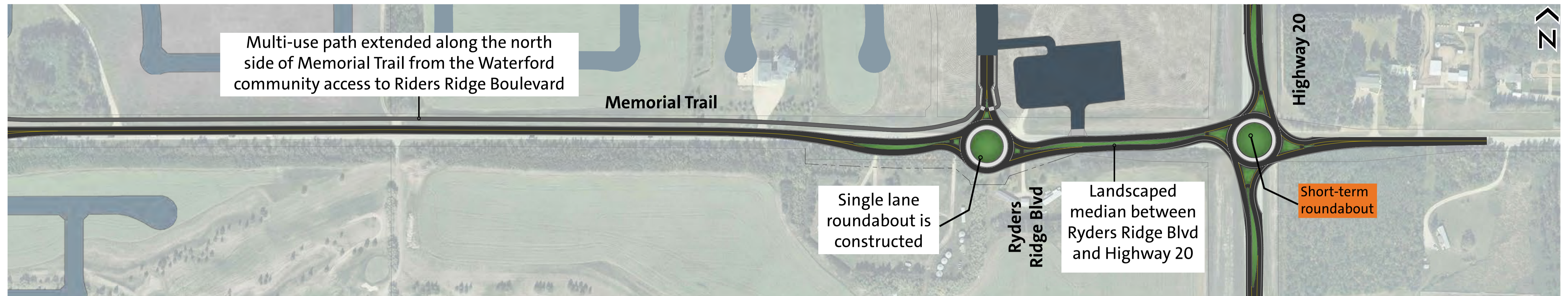


# Long-term Plan - Central Section

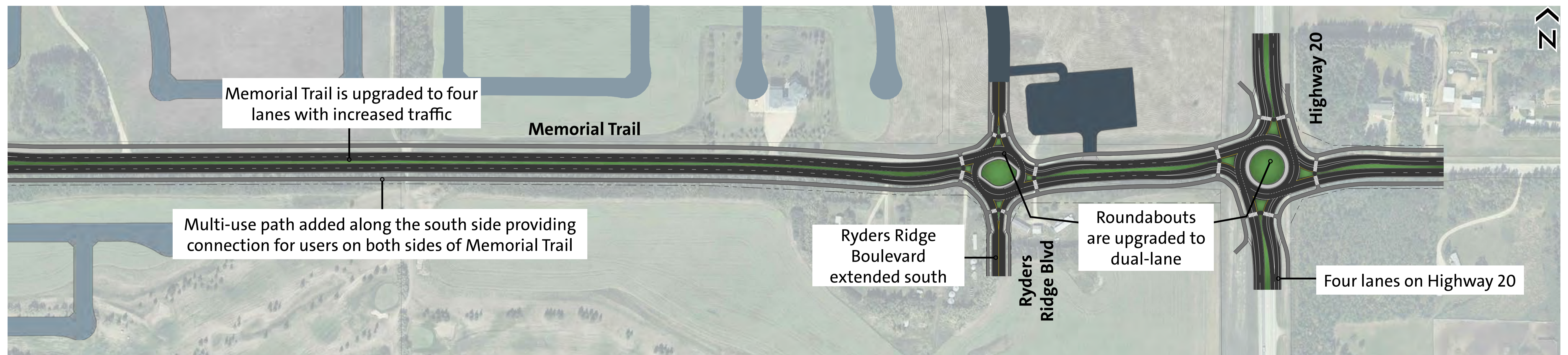


Note: Future roads are shown in light grey as per the approved outline plans. Newly built roads are in dark grey.

# Medium-term Plan - East Section



# Long-term Plan - East Section



Note: Future roads are shown in light grey as per the approved outline plans. Newly built roads are in dark grey.

# Roundabout Types

There are two types of roundabouts proposed in the long-term plan for Memorial Trail. The images below show an example of each type of roundabout, and highlights where they are located in the long-term plan.

## Type A

### *Four lanes all directions*

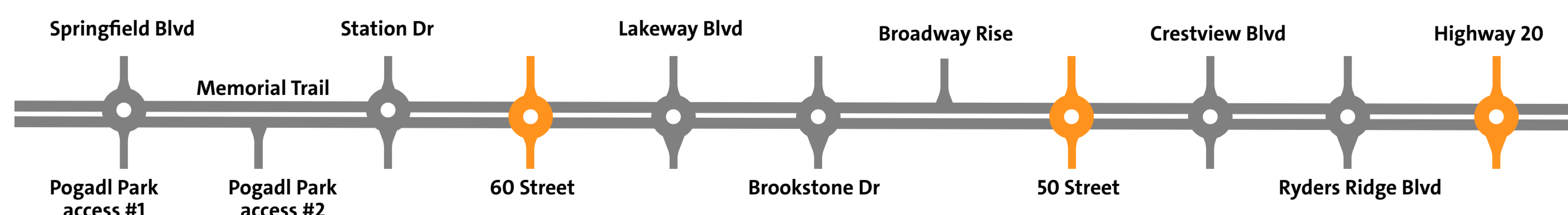
**Lanes:** both Memorial Trail and the cross street have four lanes of travel (two in each direction).

### **How it works:**

When you enter this type of roundabout from any direction:

- The inside (left) lane is used travel straight through the intersection or to turn left by travelling around the intersection
- The outside (right) lane is used to turn right or travel straight through.

### **Locations indicated in orange:**



### **Type A Plan View**

The image below shows how to navigate a four lane roundabout from all directions



# Roundabout Types

## Type B

### *Four lanes by two lanes*

**Lanes:** Memorial Trail has four lanes of travel (two in each direction) while the cross street has two lanes of travel (one in each direction).

### **How it works:**

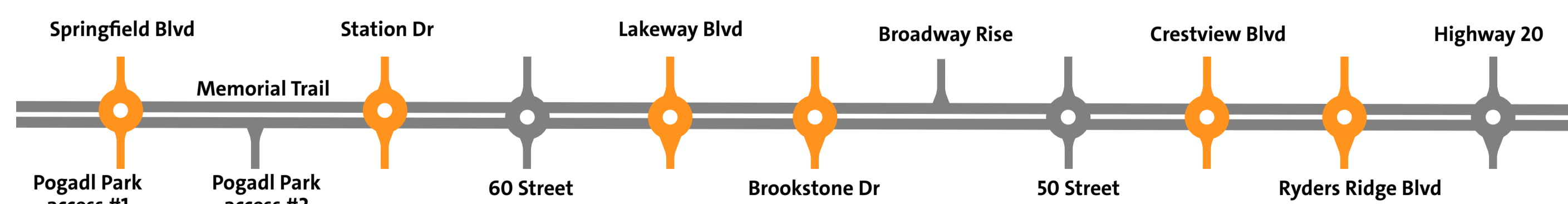
When you enter from Memorial Trail (east-west):

- The inside (left) lane is used to travel straight through the intersection or to turn left by travelling around the intersection
- The outside (right) lane is used to turn right or travel straight through

When you enter from a cross street (north-south):

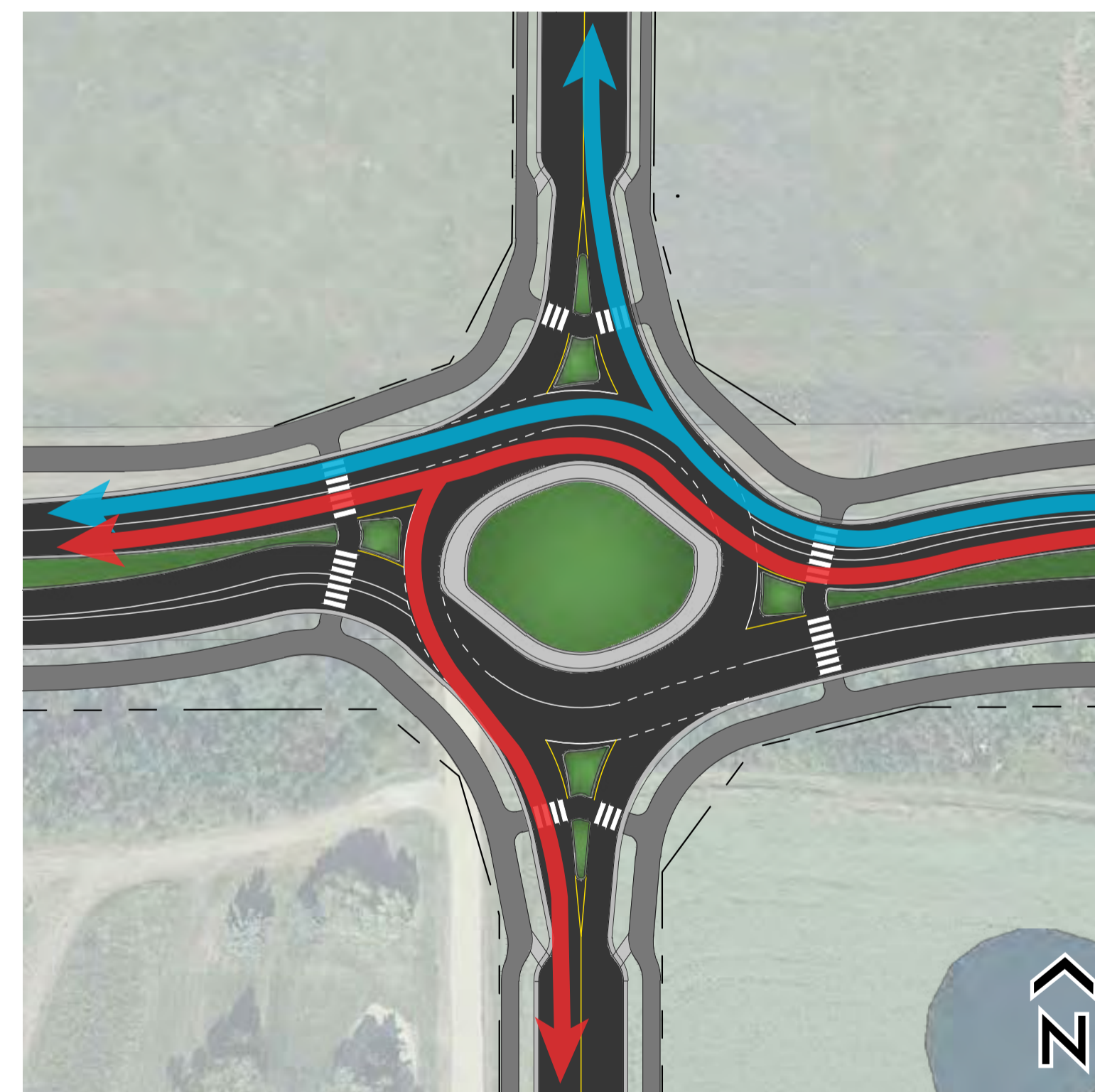
- Turn right, travel straight or turn left by traveling along the outside lane.

### **Locations indicated in orange:**



### **Type B Plan View**

The image below shows how to navigate a four lane by two lane roundabout from Memorial Trail.



The image below shows how to navigate a four lane by two lane roundabout from the cross street.



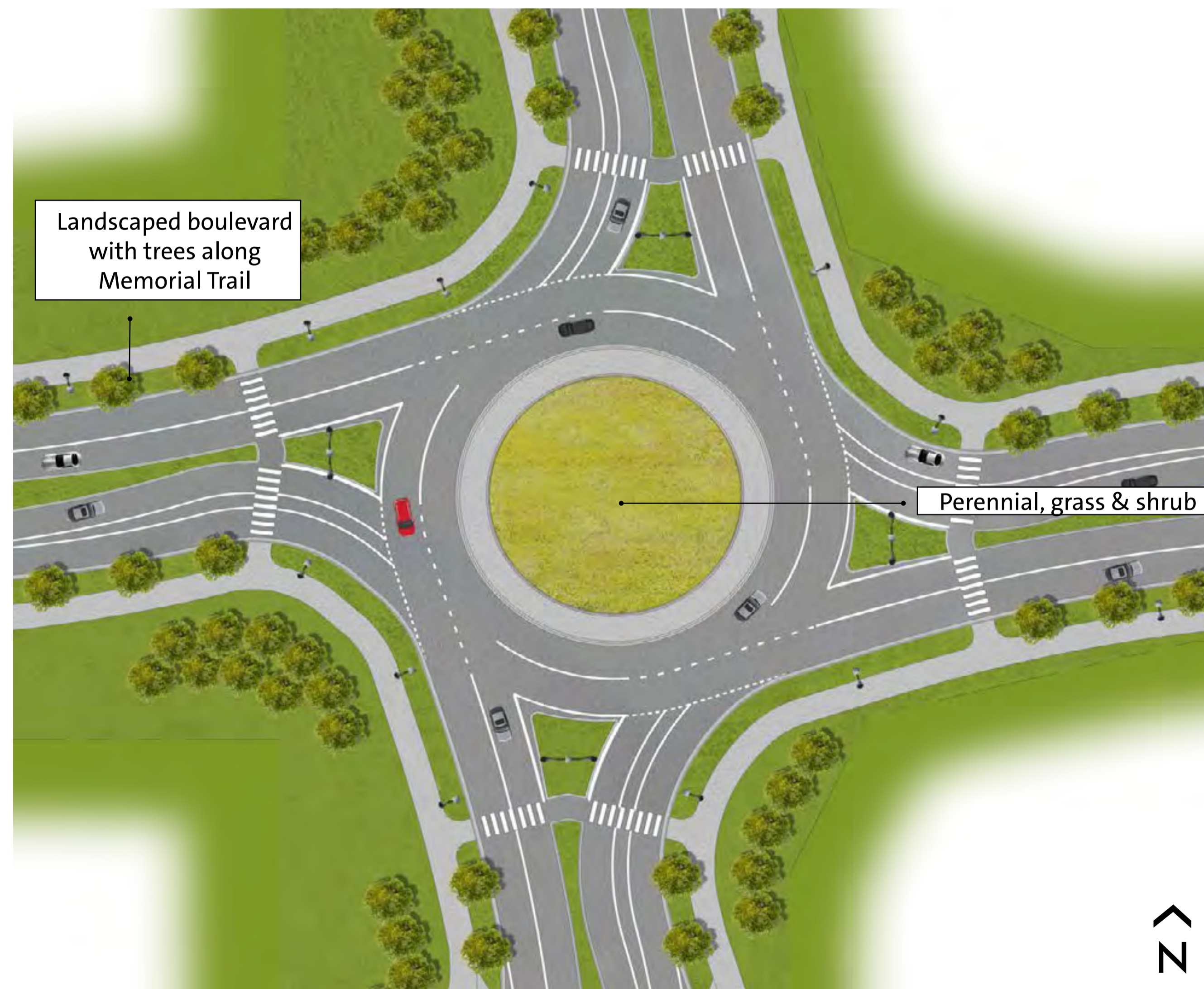
# Roundabout Landscaping Options

Two landscaping themes, prairies or mountains, are proposed for the roundabouts in the long-term plan. The theme that will be used for the roundabouts will be determined during detailed design closer to when the plans are implemented.

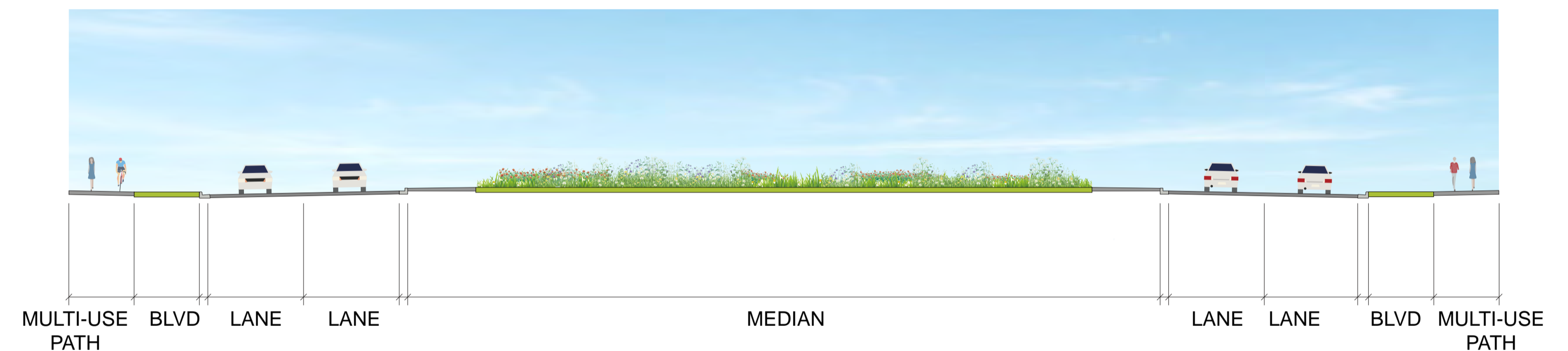
## Prairies

This option uses a range of perennials, grasses and shrubs to create a colourful roundabout with year-round interest.

### Plan View



### Cross-section



### Examples

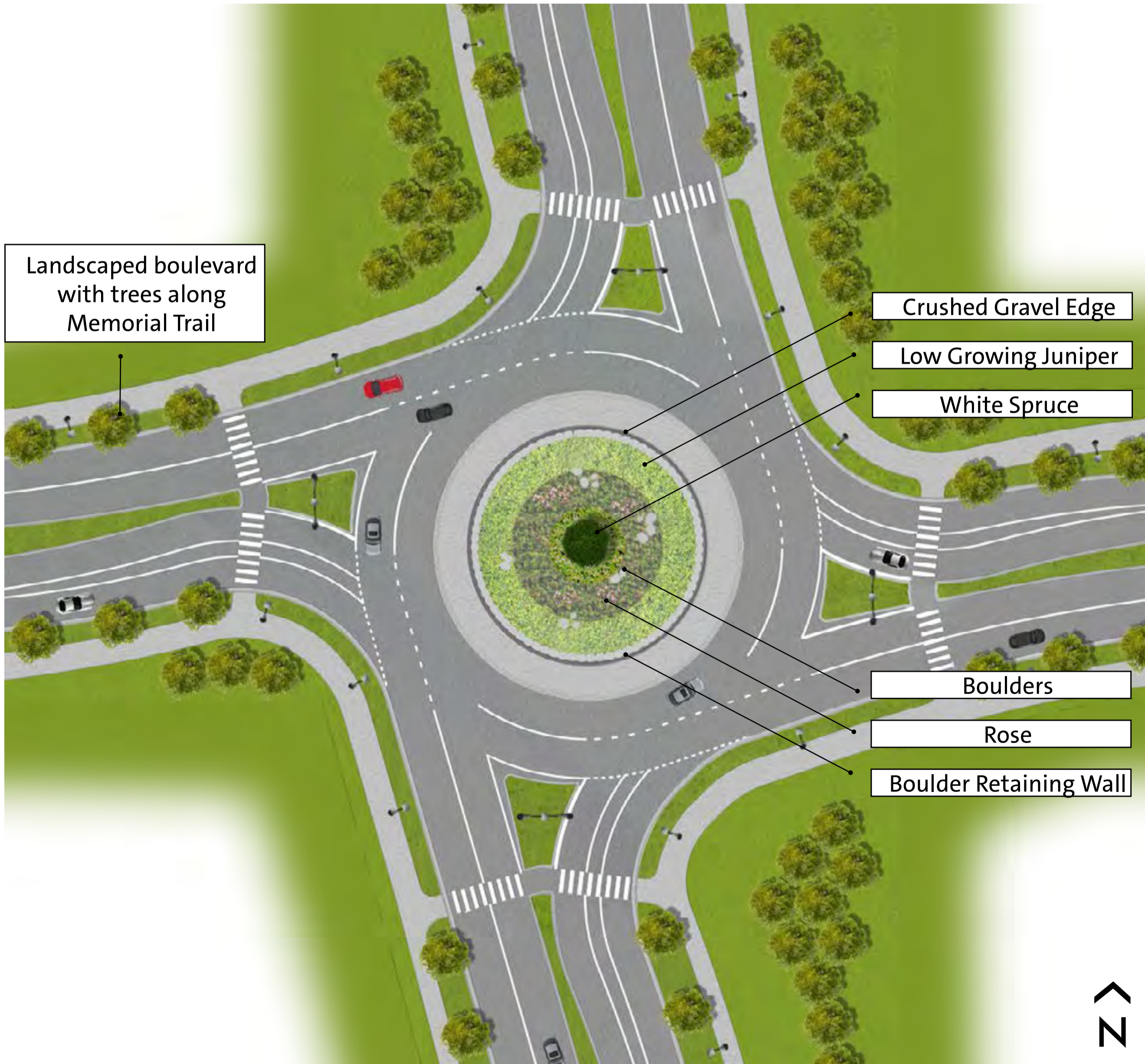


# Roundabout Landscaping Options

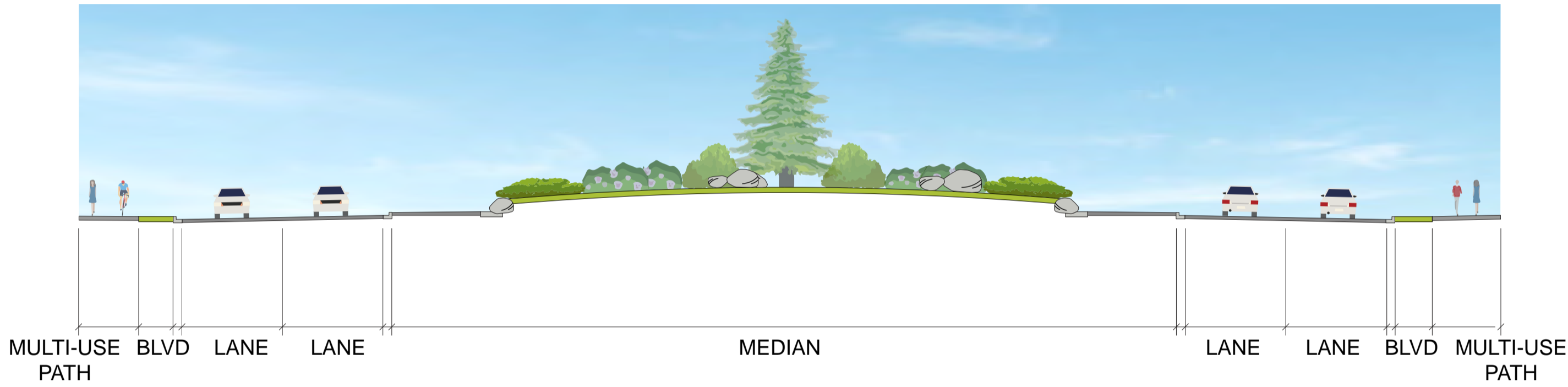
## Mountains

This option uses boulders and a mixture of shrubs and trees to create an attractive planting bed with seasonal interest.

### Plan View



### Cross-section



### Examples



# How to Provide Input and Next Steps

## We want to hear from you!

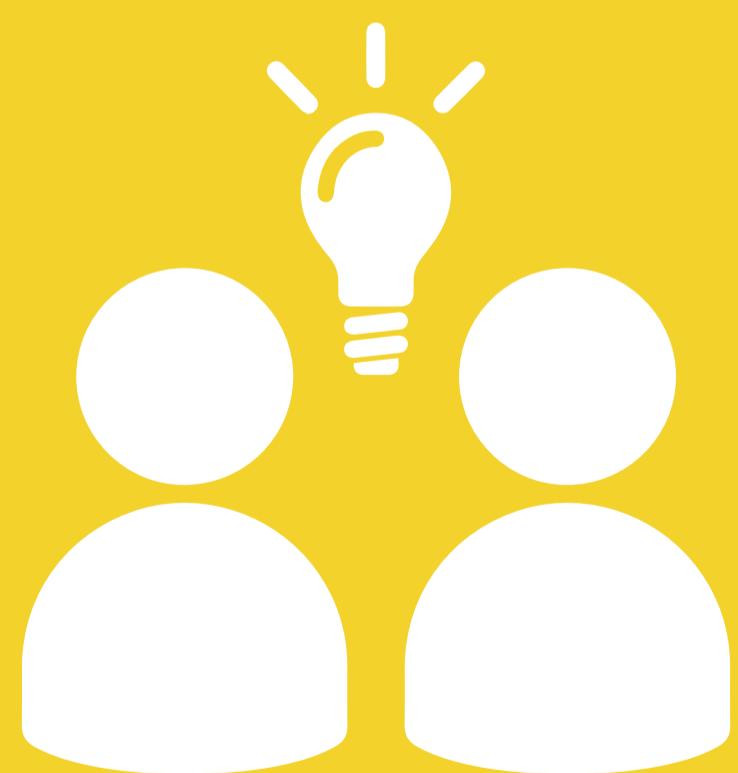
Please visit [sylvanlake.ca/communications](https://sylvanlake.ca/communications) to learn about the project, register for the Live Q&A and provide your feedback.

## Online Survey and Mapping Tool

Available October 4 to October 25, 2021

## Live Q&A

October 14, 2021 @ 5:30 P.M.



## Next Steps

The project team will review the input gathered during this phase of engagement to finalize the short-, medium- and long term Functional Plans for Memorial Trail. Next steps for the corridor will be preliminary design of the short-term plan of the Highway 20 and Memorial Trail roundabout.